



**SINOTAG**

# CONTENTS

02	Company Introduction
03	System
15	Board
17	Deactivator & Verifier
21	Alarming Series
23	Hard Tag
38	Bottle Tag
42	Ink Tag
45	Special Tag
46	AM Label
47	RF Label
50	Source Tagging
52	EM Series
53	Safer
59	Detacher
65	Lanyard
67	Pin
69	Coil & Clutch



## *ABOUT US*

Sinotag Electronic Technology Co., Ltd is a leading manufacturer of EAS (Electronic Article Surveillance) products in China. With over 10 years experience in EAS industry, Sinotag has developed more than 200 different types of EAS products ranging from RF/AM Systems & Deactivators, RF/AM Hard Tags, RF/AM Labels, Source Tagging Items and EAS Accessories etc. We are committed to provide our customers one stop shop solution for all their security needs with top quality and competitive price.

Sinotag team is both rich in manufacture experience and professional in international sales. Besides, we are dedicated in innovation and creation so as to stand at forefront in competition. Due to our sustained endeavor, Sinotag has kept fast development and proved its success in recent years. Meanwhile, Sinotag has successfully built its network worldwide and set up warehouses in the States and Europe to better serve our customers. We are confident that Sinotag has more bright future and look forward to working with you.



### SD-100(RF Chrome System)

Frequency: 8.2MHz

Material: Stainless steel frame with plastic base cover.

Dimension: 152cm(Height), 31cm(Width), 7cm(Depth), 4kg(Weight)

Packing:

Mono: 1pc/ctn, 0.14cbm(170x51x16cm), 7kg

Dual: 2pcs/ctn, 0.22cbm(170x51x25cm), 12kg

Detection (Mono):

RF Label(4x4): 2x80cm

Mini Tag(Mini Square): 2x110cm

Midi Tag(R50): 2x130cm

Max Tag(Alpha): 2x150cm

Detection (Dual):

RF Label(4x4): 140cm

Mini Tag(Mini Square): 160cm

Midi Tag(R50): 180cm

Max Tag(Alpha): 200cm

Main Features

DSP (Digital Signal Processing) technology with high sensitivity.

Auto noise filtering to counter interference and minimize false alarm.

High pick rate with ability to distinguish moving and static tags & labels.

Easy installation with auto synchronization (wireless connection).

Audible and visual alarm indication with adjustable speaker and LED light.



### SD-101(RF Chrome System)

Frequency: 8.2MHz

Material: Stainless steel frame with metal base cover.

Dimension: 167cm(Height), 32cm(Width), 7cm(Depth), 7kg(Weight)

Packing:

Mono: 1pc/ctn, 0.057cbm(175x36x16cm), 10kg

Dual: 2pcs/ctn, 0.14cbm(175x36x25cm), 20kg

Detection(Mono):

RF Label(4x4): 2x80cm

Mini Tag(Mini Square): 2x110cm

Midi Tag(R50): 2x130cm

Max Tag(Alpha): 2x150cm

Detection(Dual):

RF Label(4x4): 140cm

Mini Tag(Mini Square): 160cm

Midi Tag(R50): 180cm

Max Tag(Alpha): 200cm

Main Features

DSP (Digital Signal Processing) technology with high sensitivity.

Auto noise filtering to counter interference and minimize false alarm.

High pick rate with ability to distinguish moving and static tags & labels.

Easy installation with auto synchronization (wireless connection).

Audible and visual alarm indication with adjustable speaker and LED light.





### SD-102(RF Aluminum System)

Frequency: 8.2MHz  
Material: Aluminum frame with metal or plastic base cover.  
Removable acrylic plates for advertising purpose (Optional).  
Color: Black/Gray or Customized  
Dimension: 167cm(Height), 46cm(Width), 7cm(Depth), 5kg(Weight)  
Packing:  
Mono: 1pc/ctn, 0.04cbm(169x47x5cm), 10kg  
Dual: 2pcs/ctn, 0.06cbm(169x47x8cm), 14kg  
Detection(Mono):  
RF Label(4x4): 2x90cm  
Mini Tag(Mini Square): 2x120cm  
Midi Tag(R50): 2x140cm  
Max Tag(Alpha): 2x160cm  
Detection(Dual):  
RF Label(4x4): 150cm  
Mini Tag(Mini Square): 170cm  
Midi Tag(R50): 190cm  
Max Tag(Alpha): 210cm

**Main Features**  
DSP (Digital Signal Processing) technology with high sensitivity.  
Auto noise filtering to counter interference and minimize false alarm.  
High pick rate with ability to distinguish moving and static tags & labels.  
Easy installation with auto synchronization (wireless connection).  
Audible and visual alarm indication with adjustable speaker and LED light.



### SD-103(RF Aluminum System)

Frequency: 8.2MHz  
Material: Aluminum frame with metal base cover.  
Removable acrylic plates for advertising purpose (Optional).  
Color: Black/Gray or Customized  
Dimension: 162cm(Height), 40cm(Width), 4cm(Depth), 7.5kg(Weight)  
Packing:  
Mono: 1pc/ctn, 0.083cbm(168x45x11cm), 8kg  
Dual: 2pcs/ctn, 0.113cbm(168x45x15cm), 14kg  
Detection(Mono):  
RF Label(4x4): 2x90cm  
Mini Tag(Mini Square): 2x120cm  
Midi Tag(R50): 2x140cm  
Max Tag(Alpha): 2x160cm  
Detection(Dual):  
RF Label(4x4): 150cm  
Mini Tag(Mini Square): 170cm  
Midi Tag(R50): 190cm  
Max Tag(Alpha): 210cm

**Main Features**  
DSP (Digital Signal Processing) technology with high sensitivity.  
Auto noise filtering to counter interference and minimize false alarm.  
High pick rate with ability to distinguish moving and static tags & labels.  
Easy installation with auto synchronization (wireless connection).  
Audible and visual alarm indication with adjustable speaker and LED light.



### SD-104(RF Aluminum System)

Frequency: 8.2MHz  
 Material: Aluminum frame with metal base cover.  
 Removable acrylic plates for advertising purpose (Optional).  
 Color: Black/Gray or Customized  
 Dimension: 167cm(Height), 44cm(Width), 7cm(Depth), 8.5kg(Weight)  
 Packing:  
 Mono: 1pc/ctn, 0.06cbm(169x47x8cm), 9kg  
 Dual: 2pcs/ctn, 0.08cbm(169x47x11cm), 19kg  
 Detection(Mono):  
 RF Label(4x4): 2x90cm  
 Mini Tag(Mini Square): 2x120cm  
 Midi Tag(R50): 2x140cm  
 Max Tag(Alpha): 2x160cm  
 Detection(Dual):  
 RF Label(4x4): 150cm  
 Mini Tag(Mini Square): 170cm  
 Midi Tag(R50): 190cm  
 Max Tag(Alpha): 210cm

#### Main Features

DSP (Digital Signal Processing) technology with high sensitivity.  
 Auto noise filtering to counter interference and minimize false alarm.  
 High pick rate with ability to distinguish moving and static tags & labels.  
 Easy installation with auto synchronization (wireless connection).  
 Audible and visual alarm indication with adjustable speaker and LED light.



### SD-105(RF Aluminum System)

Frequency: 8.2MHz  
 Material: Aluminum frame with metal base cover.  
 Removable acrylic plates for advertising purpose (Optional).  
 Color: Black/Gray or Customized  
 Dimension: 167cm(Height), 33cm(Width), 7cm(Depth), 7kg(Weight)  
 Packing:  
 Mono: 1pc/ctn, 0.05cbm(169x36x8cm), 8kg  
 Dual: 2pcs/ctn, 0.07cbm(169x36x11cm), 16kg  
 Detection(Mono):  
 RF Label(4x4): 2x80cm  
 Mini Tag(Mini Square): 2x110cm  
 Midi Tag(R50): 2x130cm  
 Max Tag(Alpha): 2x150cm  
 Detection(Dual):  
 RF Label(4x4): 140cm  
 Mini Tag(Mini Square): 160cm  
 Midi Tag(R50): 180cm  
 Max Tag(Alpha): 200cm

#### Main Features

DSP (Digital Signal Processing) technology with high sensitivity.  
 Auto noise filtering to counter interference and minimize false alarm.  
 High pick rate with ability to distinguish moving and static tags & labels.  
 Easy installation with auto synchronization (wireless connection).  
 Audible and visual alarm indication with adjustable speaker and LED light.



### SD-110(RF Acrylic System)

Frequency: 8.2MHz  
Material: High grade acrylic frame with metal base cover.  
Dimension: 158cm(Height), 36cm(Width), 2cm(Depth), 18kg(Weight)  
Packing:  
Mono: 1pc/ctn, 0.08cbm(158x41x13cm), 20kg  
Dual: 2pcs/ctn, 0.1cbm(158x41x16cm), 38kg  
Detection(Mono):  
RF Label(4x4): 2x90cm  
Mini Tag(Mini Square): 2x120cm  
Midi Tag(R50): 2x140cm  
Max Tag(Alpha): 2x160cm  
Detection(Dual):  
RF Label(4x4): 150cm  
Mini Tag(Mini Square): 170cm  
Midi Tag(R50): 190cm  
Max Tag(Alpha): 210cm

**Main Features**  
DSP (Digital Signal Processing) technology with high sensitivity.  
Auto noise filtering to counter interference and minimize false alarm.  
High pick rate with ability to distinguish moving and static tags & labels.  
Easy installation with auto synchronization (wireless connection).  
Audible and visual alarm indication with adjustable speaker and LED light.



### SD-121(RF Stainless steel)

Frequency: 8.2MHz  
Material: Stainless steel frame with metal base cover.  
Dimension: 165cm(Height), 34cm(Width), 2.5cm(Depth), 7kg(Weight)  
Packing:  
Dual: 2pcs/ctn, 0.085m(168x35x14cm), 15kg  
Detection(Dual):  
RF Label(4x4): 140cm  
Mini Tag(Mini Square): 160cm  
Midi Tag(R50): 180cm  
Max Tag(Alpha): 200cm

**Main Features**  
DSP (Digital Signal Processing) technology with high sensitivity.  
Auto noise filtering to counter interference and minimize false alarm.  
High pick rate with ability to distinguish moving and static tags & labels.  
Easy installation with auto synchronization (wireless connection).  
Audible and visual alarm indication with adjustable speaker and LED light.



### SD-123(RF Plastic System)

Frequency: 8.2MHz  
Material: Aluminum frame coated with plastic and with metal base cover.  
Dimension: 156cm(Height), 37cm(Width), 9cm(Depth), 6kg(Weight)  
Packing: 2pcs/ctn, 0.12cbm(162x43x18cm), 17kg  
Detection(Dual):  
RF Label(4x4): 140cm  
Mini Tag(Mini Square): 160cm  
Midi Tag(R50): 180cm  
Max Tag(Alpha): 200cm

**Main Features**  
DSP (Digital Signal Processing) technology with high sensitivity.  
Auto noise filtering to counter interference and minimize false alarm.  
High pick rate with ability to distinguish moving and static tags & labels.  
Easy installation with simple synchronization by normal wires in connection.  
Audible and visual alarm indication with adjustable speaker and LED light.



### SD-124(RF Plastic System)

Frequency: 8.2MHz  
Material: Chrome frame coated with plastic and with plastic base cover.  
Dimension: 161cm(Height), 34cm(Width), 10cm(Depth), 7.5kg(Weight)  
Packing: 2pcs/ctn, 0.2cbm(174x44x26cm), 20kg  
Detection(Dual):  
RF Label(4x4): 140cm  
Mini Tag(Mini Square): 160cm  
Midi Tag(R50): 180cm  
Max Tag(Alpha): 200cm

**Main Features**  
DSP (Digital Signal Processing) technology with high sensitivity.  
Auto noise filtering to counter interference and minimize false alarm.  
High pick rate with ability to distinguish moving and static tags & labels.  
Easy installation with simple synchronization by normal wires in connection.  
Audible and visual alarm indication with adjustable speaker and LED light.





### SD-154(AM Plastic System)

Frequency: 58KHz

Material: Fireproof ABS plastic frame with plastic base cover.

Color: White/Gray or Customized

Dimension: 144cm(Height), 35cm(Width), 10cm(Depth), 6.5kg(Weight)

Packing:

Mono: 1pc/ctn, 0.12cbm(150x45x19cm),9kg

Dual: 2pcs/ctn, 0.15cbm(150x45x22cm),15kg

Detection:

DR Label: 2x80cm(Mono), 160cm(Master/Slave)

Mini Pencil: 2x120cm(Mono), 240cm(Master/Slave)

Max Pencil: 2x140cm(Mono), 280cm(Master/Slave)

#### Main Features

DSP (Digital Signal Processing) technology with high sensitivity.

Auto noise filtering to counter interference and minimize false alarm.

All electronics are integrated into antennas with no controller needed.

Easy installation and synchronization with all parameters tuned by software.

It can work as either Mono or Master/Slave version adjusted by software.

Audible and visual alarm indication with adjustable speaker and LED light.



### SD-155(AM Plastic System)

Frequency: 58KHz

Material: Fireproof ABS plastic frame with plastic base cover.

Color: White/Gray or Customized

Dimension: 161cm(Height), 44cm(Width), 15cm(Depth), 11kg(Weight)

Packing:

Mono: 1pc/ctn, 0.18cbm(164x53x21cm),14kg

Dual: 2pcs/ctn, 0.22cbm(164x53x25cm),25kg

Detection:

DR Label: 2x80cm(Mono), 160cm(Master/Slave)

Mini Pencil: 2x120cm(Mono), 240cm(Master/Slave)

Max Pencil: 2x140cm(Mono), 280cm(Master/Slave)

#### Main Features

DSP (Digital Signal Processing) technology with high sensitivity.

Auto noise filtering to counter interference and minimize false alarm.

All electronics are integrated into antennas with no controller needed.

Easy installation and synchronization with all parameters tuned by software.

It can work as either Mono or Master/Slave version adjusted by software.

Audible and visual alarm indication with adjustable speaker and LED light.





### SD-155B(AM Plastic System)

Frequency: 58KHz

Material: Fireproof ABS plastic frame with plastic base cover.

Color: White/Gray or Customized

Dimension: 161cm(Height), 44cm(Width), 15cm(Depth), 11kg(Weight)

Packing:

Mono: 1pc/ctn, 0.18cbm(164x53x21cm), 14kg

Dual: 2pcs/ctn, 0.22cbm(164x53x25cm), 25kg

Detection:

DR Label: 2x80cm(Mono), 160cm(Master/Slave)

Mini Pencil: 2x120cm(Mono), 240cm(Master/Slave)

Max Pencil: 2x140cm(Mono), 280cm(Master/Slave)

#### Main Features

DSP (Digital Signal Processing) technology with high sensitivity.

Auto noise filtering to counter interference and minimize false alarm.

All electronics are integrated into antennas with no controller needed.

Easy installation and synchronization with all parameters tuned by software.

It can work as either Mono or Master/Slave version adjusted by software.

Audible and visual alarm indication with adjustable speaker and LED light.



### SD-156(AM Plastic System)

Frequency: 58KHz

Material: Fireproof ABS plastic frame with plastic base cover.

Color: White/Gray or Customized

Dimension: 139cm(Height), 35cm(Width), 14cm(Depth), 14kg(Weight)

Packing:

Mono: 1pc/ctn, 0.12cbm(150x45x19cm), 16kg

Dual: 2pcs/ctn, 0.15cbm(150x45x22cm), 30kg

Detection:

DR Label: 2x80cm(Mono), 160cm(Master/Slave)

Mini Pencil: 2x120cm(Mono), 240cm(Master/Slave)

Max Pencil: 2x140cm(Mono), 280cm(Master/Slave)

#### Main Features

DSP (Digital Signal Processing) technology with high sensitivity.

Auto noise filtering to counter interference and minimize false alarm.

All electronics are integrated into antennas with no controller needed.

Easy installation and synchronization with all parameters tuned by software.

It can work as either Mono or Master/Slave version adjusted by software.

Audible and visual alarm indication with adjustable speaker and LED light.



### SD-159(AM Acrylic System)

Frequency: 58KHz

Material: High grade acrylic frame with stainless steel base cover.

Dimension: 150cm(Height), 39cm(Width), 2.5cm(Depth), 24kg(Weight)

Packing:

Mono: 1pc/ctn, 0.131cbm,(160x48x17cm),25kg

Detection:

DR Label: 2x80cm(Mono), 160cm(Master/Slave)

Mini Pencil: 2x100cm(Mono), 200cm(Master/Slave)

Max Pencil: 2x110cm(Mono), 220cm(Master/Slave)

Main Features

DSP (Digital Signal Processing) technology with high sensitivity.

Auto noise filtering to counter interference and minimize false alarm.

All electronics are integrated into antennas with no controller needed.

Easy installation and synchronization with all parameters tuned by software.

It can work as either Mono or Master/Slave version adjusted by software.

Audible and visual alarm indication with adjustable speaker and LED light.



### SD-160(AM Acrylic System)

Frequency: 58KHz

Material: Fireproof ABS plastic frame with plastic base cover and inserted acrylic plate.

Dimension: 154cm(Height), 42cm(Width), 12cm(Depth), 12kg(Weight)

Packing:

Mono: 1pc/ctn, 0.176cbm,(161x52x21cm),13kg

Detection:

DR Label: 2x80cm(Mono), 160cm(Master/Slave)

Mini Pencil: 2x100cm(Mono), 200cm(Master/Slave)

Max Pencil: 2x110cm(Mono), 220cm(Master/Slave)

Main Features

DSP (Digital Signal Processing) technology with high sensitivity.

Auto noise filtering to counter interference and minimize false alarm.

All electronics are integrated into antennas with no controller needed.

Easy installation and synchronization with all parameters tuned by software.

It can work as either Mono or Master/Slave version adjusted by software.

Audible and visual alarm indication with adjustable speaker and LED light.



### SD-160B(AM Acrylic System)

Frequency: 58KHz

Material: Fireproof ABS plastic frame with plastic base cover and inserted acrylic plate.

Dimension: 157cm(Height), 43cm(Width), 15cm(Depth), 11kg(Weight)

Packing:

Mono: 1pc/ctn, 0.181cbm,(163x53x21cm),12kg

Detection:

DR Label: 2x80cm(Mono), 160cm(Master/Slave)

Mini Pencil: 2x100cm(Mono), 200cm(Master/Slave)

Max Pencil: 2x110cm(Mono), 220cm(Master/Slave)

#### Main Features

DSP (Digital Signal Processing) technology with high sensitivity.

Auto noise filtering to counter interference and minimize false alarm.

All electronics are integrated into antennas with no controller needed.

Easy installation and synchronization with all parameters tuned by software.

It can work as either Mono or Master/Slave version adjusted by software.

Audible and visual alarm indication with adjustable speaker and LED light.



### SD-161(AM Plastic System)

Frequency: 58KHz

Material: Fireproof ABS plastic frame with plastic base cover.

Dimension: 150cm(Height), 41cm(Width), 13cm(Depth), 17kg(Weight)

Packing:

Dual: 2pcs/ctn, 0.207cbm,(153x52x26cm),18kg

Detection:

DR Label: 2x80cm(Mono), 160cm(Master/Slave)

Mini Pencil: 2x100cm(Mono), 200cm(Master/Slave)

Max Pencil: 2x110cm(Mono), 220cm(Master/Slave)

#### Main Features

DSP (Digital Signal Processing) technology with high sensitivity.

Auto noise filtering to counter interference and minimize false alarm.

All electronics are integrated into antennas with no controller needed.

Easy installation and synchronization with all parameters tuned by software.

It can work as either Mono or Master/Slave version adjusted by software.

Audible and visual alarm indication with adjustable speaker and LED light.



### SD-162(AM Glass Fiber)

Frequency: 58KHz

Material: Glass fiber frame with stainless steel base cover.

Dimension: 155cm(Height), 44cm(Width), 13cm(Depth), 10.50kg(Weight)

Packing:

Mono: 1pc/ctn, 0.10cbm,(162x49x13cm),10.50kg

Dual: 2pcs/ctns, 0.20cbm,(162x49x13cm),21.00kg

Detection:

DR Label: 2x80cm(Mono), 160cm(Master/Slave)

Mini Pencil: 2x100cm(Mono), 200cm(Master/Slave)

Max Pencil: 2x110cm(Mono), 220cm(Master/Slave)

#### Main Features

DSP (Digital Signal Processing) technology with high sensitivity.

Auto noise filtering to counter interference and minimize false alarm.

All electronics are integrated into antennas with no controller needed.

Easy installation and synchronization with all parameters tuned by software.

It can work as either Mono or Master/Slave version adjusted by software.

Audible and visual alarm indication with adjustable speaker and LED light.



### SD-164(AM Plastic System)

Frequency: 58KHz

Material: Fiber reinforced plastic frame with fiber reinforced plastic base cover.

Dimension: 155cm(Height), 50cm(Width), 13cm(Depth), 11.40kg(Weight)

Packing:

Mono: 1pc/ctn, 0.15cbm,(159x60x16cm),11.40kg

Dual: 2pcs/ctn, 0.30cbm,(159x60x16cm),22.80kg

Detection:

DR Label: 2x80cm(Mono), 160cm(Master/Slave)

Mini Pencil: 2x100cm(Mono), 200cm(Master/Slave)

Max Pencil: 2x110cm(Mono), 220cm(Master/Slave)

#### Main Features

DSP (Digital Signal Processing) technology with high sensitivity.

Auto noise filtering to counter interference and minimize false alarm.

All electronics are integrated into antennas with no controller needed.

Easy installation and synchronization with all parameters tuned by software.

It can work as either Mono or Master/Slave version adjusted by software.

Audible and visual alarm indication with adjustable speaker and LED light.





### SD-165(AM/RF Plastic System)

Frequency: 58KHz/8.2MHz  
 Material: Fireproof ABS plastic frame with metal base cover.  
 Dimension: 168cm(Height), 39cm(Width), 12cm(Depth), 9.88kg(Weight)  
 Packing:  
 Mono: 1pc/ctn, 0.11cbm,(175x46x13cm),10kg  
 Dual: 2pcs/ctns, 0.22cbm,(175x46x13cm),20kg  
 Detection:  
 DR Label: 2x80cm(Mono), 160cm(Master/Slave)  
 Mini Pencil: 2x100cm(Mono), 200cm(Master/Slave)  
 Max Pencil: 2x110cm(Mono), 220cm(Master/Slave)  
 RF Label(4x4): 2x90cm (Mono), 150cm (Dual)  
 Mini Tag(Mini Square): 2x120cm (Mono), 170cm (Dual)  
 Midi Tag(R50): 2x140cm (Mono), 190cm (Dual)  
 Max Tag(Alpha): 2x160cm(Mono), 210cm(Dual)

#### Main Features

DSP (Digital Signal Processing) technology with high sensitivity.  
 Auto noise filtering to counter interference and minimize false alarm.  
 All electronics are integrated into antennas with no controller needed.  
 Easy installation and synchronization with all parameters tuned by software.  
 It can work as either Mono or Master/Slave version adjusted by software.  
 Audible and visual alarm indication with adjustable speaker and LED light.



### SD-8000(EM Acrylic System)

Frequency:100KC  
 Material: High grade acrylic frame with stainless steel base cover.  
 Dimension: 158cm(Height), 54cm(Width), 2.5cm(Depth)  
 Main engine power:3.6-5W  
 Voltage:AC220V,50HZ





### SD-8068(EM Plastic System)

Frequency:100KC  
Material: Fireproof ABS plastic frame with plastic base cover.  
Dimension: 146cm(Height), 43cm(Width), 8cm(Depth)  
Main engine power:3.6-5W  
Voltage:AC220V,50HZ



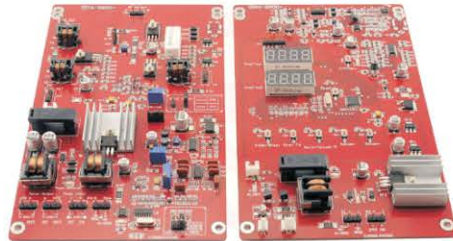
### SD-8088(EM Acrylic System)

Frequency:100KC  
Material: High grade acrylic frame with stainless steel base cover.  
Dimension: 150cm(Height), 40cm(Width), 2.5cm(Depth)  
Main engine power:3.6-5W  
Voltage:AC220V,50HZ



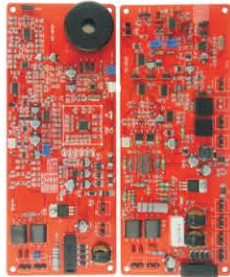
**SD-401(DSP TX/RX Board)**

Frequency: 8.2MHz  
 Dimension: 215mmx86mm  
 Packing: 20sets/ctn, 0.04cbm(40x42x24cm), 7kg  
 Description: DSP technology, high sensitivity, self adjusting to enviroment, auto noise filtering.



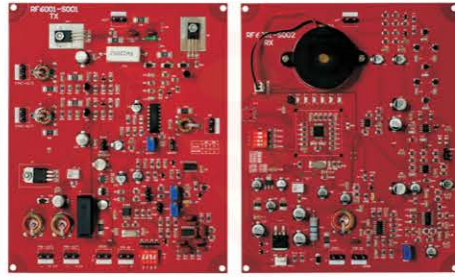
**SD-402(DSP TX/RX Board)**

Frequency: 8.2MHz  
 Dimension: 200mmx120mm  
 Packing: 20sets/ctn, 0.04cbm(40x42x24cm), 7kg  
 Description: DSP technology, high sensitivity, self adjusting to enviroment, auto noise filtering.



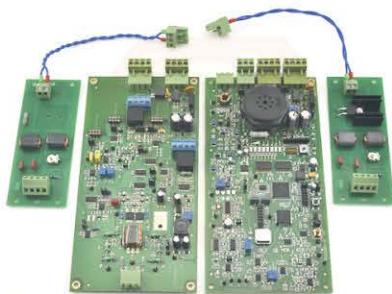
**SD-402B(DSP TX/RX Board)**

Frequency: 8.2MHz  
 Dimension: 205mmx77.5mm  
 Packing: 20sets/ctn, 0.04cbm(40x42x24cm), 7kg  
 Description: DSP technology, high sensitivity, self adjusting to enviroment, auto noise filtering.



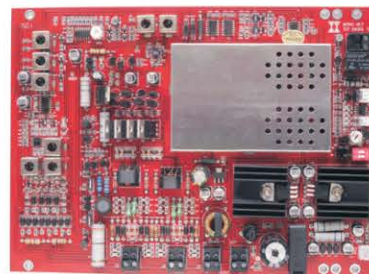
**SD-403(TX/RX Board)**

Frequency: 8.2MHz  
 Dimension: 200mmx160mm  
 Packing: 20sets/ctn, 0.04cbm(40x42x24cm), 7kg  
 Description: High sensitivity, self adjusting to enviroment, auto noise filtering.



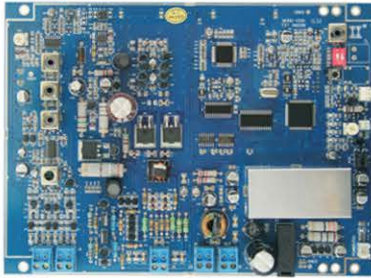
**SD-404(DSP TX/RX Board)**

Frequency: 8.2MHz  
 Dimension: 200mmx100mm(Main Board)  
 130mmx50mm(Matching Board)  
 Packing: 20sets/ctn, 0.04cbm(40x42x24cm), 7kg  
 Description: DSP technology, wide detection, self adjusting to enviroment, auto noise filtering.



**SD-501(Mono Board)**

Frequency: 8.2MHz  
 Dimension: 200mmx160mm  
 Packing: 10pcs/ctn, 0.019cbm(40x20x24cm), 4kg  
 Description: DSP technology, high sensitivity, no false alarming, auto noise filtering, auto sychronization, near tag distinguishing.



### SD-502(Mono Board)

Frequency: 8.2MHz  
Dimension: 200mmx160mm  
Packing: 10pcs/ctn, 0.019cbm(40x20x24cm), 4kg  
Description: DSP technology, high sensitivity, no false alarming, auto sychronization, near tag distinguishing.



### SD-503(Mono Board)

Frequency: 8.2MHz  
Dimension: 210mmx150mm  
Packing: 10pcs/ctn, 0.019cbm(40x20x24cm), 4kg  
Description: DSP technology, high sensitivity, no false alarming, auto sychronization, near tag distinguishing.



### SD-601(AM Board)

Frequency: 58KHz  
Dimension: 215mmx86mm  
Description: DSP technology, high sensitivity, self adjusting to enviroment, auto noise filtering.



### SD-602(AM Board)

Frequency: 58KHz  
Dimension: 215mmx86mm  
Description: DSP technology, high sensitivity, self adjusting to enviroment, auto noise filtering.



### SD-603(AM Board)

Frequency: 58KHz  
Dimension: 464mmx144mm  
Description: DSP technology, high sensitivity, self adjusting to enviroment, auto noise filtering.



### SD-604(AM Board)

Frequency: 58KHz  
Dimension: 195mmx118mm  
Description: DSP technology, high sensitivity, self adjusting to enviroment, auto noise filtering.





**SD-201(RF Deactivator)**

Frequency: 8.2MHz  
 Dimension: 245mmx235mm  
 Color: Black  
 Packing: 10pcs/ctn, 0.057cbm(43x36x37cm), 10kg  
 Description: Digital intergated deactivator with pad into one unit. It gives instant beep with visual indication once labels are killed and continous beep if labels can't be killed.



**SD-201B(RF Deactivator)**

Frequency: 8.2MHz  
 Dimension: 220mmx220mm  
 Color: Dark Purple  
 Packing: 10pcs/ctn, 0.028cbm(50x25x36cm), 11.5kg  
 Description: Digital intergated deactivator with pad into one unit. It gives instant beep with visual indication once labels are killed and continous beep if labels can't be killed.

Deactivator & Verifier



**SD-202(RF Deactivator)**

Frequency: 8.2MHz  
 Dimension: 160mmX108mmX35mm (Deactivator),  
 300mmX300mmX18mm (Pad)  
 Color: Black  
 Packing: 10pcs/ctn,0.023cbm(36x32x20cm),5kg(Deactivator)  
 10pcs/ctn,0.057cbm(43x37x36cm),5kg(Pad)  
 Description: Deactivator and pad are separated and it can work with one-to-one or one-to-two mode.



**SD-202B(RF Deactivator)**

Frequency: 8.2MHz  
 Dimension: 160mmX108mmX35mm (Deactivator),  
 300mmX300mmX18mm (Pad)  
 Color: Black  
 Packing: 10pcs/ctn,0.023cbm(36x32x20cm),5kg(Deactivator)  
 10pcs/ctn,0.057cbm(43x37x36cm),5kg(Pad)  
 Description: Deactivator and pad are separated and it can work with one-to-one or one-to-two mode. It gives continous beep if labels can't be killed.



**SD-202C(RF Scan Deactivator)**

Frequency: 8.2MHz  
 Dimension:196mmX55mmX24mm (Deactivator),  
 300mmX350mmX15mm (Pad)  
 Color: Black  
 Packing: Customized  
 Description: It deactivates 8.2MHz adhesive RF Labels. If a label is near the deactivator antenna pad, the deactivator will sense the label and subsequently increase the power to deactivate the label. When the label is deactivated there will be a short beep. If the label cannot be deactivated an ECHO signal is received and a continuous beep will appear. (External Buzzer optional).



**SD-203(AM Deactivator)**

Frequency: 58K  
 Dimension: 230mmx190mmx55mm  
 Color: Gray  
 Packing: 5 sets/ctn, 0.031cbm(39x33x24cm), 8kg  
 Description: Detect at 15cm and deactivate at 10cm. Audible and visual indication of deactivation. Plug and play allow for table top and flush mounting.



### SD-204(AM Deactivator)

Frequency: 58KHz  
Dimension: 215mmx190mmx60mm  
Color: Grey  
Packing: 6 sets/ctn, 0.078cbm(34x58x40cm), 12.5kg  
Description: Detect at 15cm and deactivate at 10cm. Audible and visual indication of deactivation. Plug and play allow for table top and flush mounting.



### SD-205(AM Deactivator)

Frequency: 58KHz  
Dimension: 530mmx370mmx170mm  
Color: Black  
Packing: 1set/ctn, 0.017cbm(31x31x18cm), 3.5kg  
Description: Detect at 15cm and deactivate at 10cm. Audible and visual indication of deactivation. The deactivator and pad are separated.



### SD-301(RF/AM Verifier)

Frequency: 8.2MHz/58KHz  
Dimension: 345mmx75mm  
Packing: 50pcs/ctn, 0.075cbm(58x35x37cm), 8kg  
Description: Detect up to 20cm for RF labels and 10cm for AM labels. Audible and visual indication of detection.



### SD-301B(AM Verifier)

Frequency: 58KHz  
Dimension: 380mmx180mmx60mm  
Packing: 1pc/ctn, 0.015cbm(35x24x18cm), 1.5kg  
Description: Detect up to 15cm for AM labels. Audible and visual indication of detection.



### SD-301C(RF/AM Verifier)

Frequency: 58khz/8.2mhz  
Dimension: 280mmx60mm  
Packing: Customized  
Description: Detect up to 20cm for RF labels and 10cm for AM labels. Audible and visual indication of detection.



### SD-301D(RF/AM Verifier)

Frequency: 8.2MHz/58KHz  
Dimension: 140mmx62mm  
Packing: Customized  
Description: Detect up to 20cm for RF labels and 10cm for AM labels. Audible and visual indication of detection.





**SD-302(RF Verifier)**

Frequency: 8.2MHz  
Dimension: 200mmx85mm  
Packing: 100pcs/ctn,0.075cbm(58x35x37cm),15kg  
Description: Detect up to 20cm for RF labels. Audible and visual indication of detection.



**SD-302B(RF Hand Deactivator)**

Frequency: 8.2MHz  
Dimension: 280mmx70mmx33mm  
Packing : 10pcs/ctn,0.073cbm(42x42x41cm),6kg  
Description: Detect up to 20cm and Deactivate up to 15cm for RF labels. Audible and visual indication of detection and deactivation. Rechargeable battery.



**SD-303(AM Manual Detacher)**

Frequency: 58KHz  
Dimension: 185mmx90mm  
Packing: 10pcs/ctn,0.034cbm(42x30x27cm),5.5kg



**SD-303B(AM Table Top)**

Frequency: 58KHz  
Dimension: 150mmx102mm  
Packing: 5sets/ctn,0.02cbm(49x20x20cm),8.5kg



**SD-303C(AM Flush Mount)**

Frequency: 58KHz  
Dimension: 220mmx180mm  
Packing: 5sets/ctn,0.031cbm(49x25x25cm),9.5kg



**SD-304(AM Touch Pad)**

Frequency: 58KHz  
Dimension: 155mmx105mmx7mm  
Packing: 100pcs/ctn, 0.02cbm(42x28x18cm), 23kg

Deactivator & Verifier



**SD-305(People Counter)**

Dimension: 112mmx65mm  
Packing: 25pcs/ctn, 0.026cbm(35cmx30cmx25cm)  
Description: Automatically tracking the number of visitors. Traffic data on desktop display for immediate inquiry. Capable to combine with EAS System during installation.



**SD-306(WG Double Checker)**

Frequency: 58KHz  
Dimension: 340mmx250mmx25mm  
Packing: Customized  
Description: Detect both hard tags and AM labels up to 20cm. Contact degaussing function.



**SD-307(Manual Large Micro Gator Detacher)**

Frequency: 58KHz  
Dimension: 245mmx114mmx75mm  
Packing: 20pcs/ctn,0.032cbm(50x40x16cm), 1 0kg.



**SD-307B(Power Gator Detacher)**

Frequency: 58KHz  
Dimension: 166mmx130mmx90mm  
Packing: Customized



**SD-308(RF Antenna Tester)**

Frequency: 8.2MHz  
Dimension: 175mmx60mm  
Packing: 100pcs/ctn,0.075cbm(58x35x37cm), 12kg  
Description:To adjust RF system by putting the tester close to TX Antenna with accuracy rate around 1 % in tolerance.



**SD-309(RF Tag Tester)**

Frequency: 8.2MHz  
Dimension:150mmx110mm  
Packing:Customized



**T-109(Box Guard)**

Frequency: 8.2MHz/58KHz  
 Spec: Dual Alarm/Trippl Alarm  
 Dimension: Ø70mm  
 Color: Gray/White/Black or customized  
 Lock: Magnetic Lock  
 Packing: 50pcs/ctn, 0.017cbm(37x37x12.5cm), 5.4kg



**T-109B(Mini Box Guard)**

Frequency: 8.2MHz/58KHz  
 Spec: Dual Alarm/Trippl Alarm  
 Dimension: Ø48mm  
 Color: Gray/White/Black or Customized  
 Lock: Magnetic Lock  
 Packing: 100pcs/carton, 0.0207cbm(30x30x23cm), 5.7kg



**T-110(Box Guard)**

Frequency: 8.2MHz/58KHz  
 Spec: Dual Alarm/Trippl Alarm  
 Dimension: Ø70mm  
 Color: Black/White/Black or Customized  
 Lock: Magnetic Lock  
 Packing: 100pcs/carton, 0.047cbm(60x42x18.5cm), 12kg



**T-110B(Mini Box Guard)**

Frequency: 8.2MHz/58KHz  
 Spec: Dual Alarm/Trippl Alarm  
 Dimension: Ø50mm  
 Color: Gray/White/Black or Customized  
 Lock: Magnetic Lock  
 Packing: 250pcs/carton, 0.046cbm(60x42x18.5cm), 13kg



**T-110C(Box Guard Web)**

Frequency: 8.2MHz/58KHz  
 Spec: Dual Alarm  
 Dimension: Ø70mmx38mm  
 Color: Black or Customized  
 Lock: Magnetic Lock  
 Packing: 100pcs/carton, 0.047cbm(60x42x18.5cm), 12kg



**T-111(Self Alarming Tag)**

Frequency: 8.2MHz/58KHz  
 Spec: Dual Alarm/Trippl Alarm  
 Dimension: 62mmx18mm  
 Color: Black/Gray/White or Customized  
 Lock: Magnetic Lock  
 Packing: 100pcs/ctn, 0.029cbm(44x31x21cm), 4.6kg

Alarming Series



**T-112(Self Alarming Tag)**

Frequency: 8.2MHz/58KHz  
Spec: Dual Alarm/Trippl Alarm  
Dimension: 52mmx31mm  
Color: Black/Gray/White or Customized  
Lock: Magnetic Lock  
Packing: Customized



**T-113(Self Alarming Tag)**

Frequency: 8.2MHz/58KHz  
Spec: Dual Alarm/Trippl Alarm  
Dimension: 80mmx40mm  
Color: Black/Gray/White or Customized  
Lock: Magnetic Lock  
Packing: Customized



**T-114(Self Alarming Tag)**

Frequency: 8.2MHz/58KHz  
Spec: Dual Alarm/Trippl Alarm  
Dimension: 90mmx35mm  
Color: Black/Gray/White or Customized  
Lock: Magnetic Lock  
Packing: 100pcs/ctn, 0.029cbm(44x31x21cm), 4.6kg



**T-115(Self Alarming Tag)**

Frequency: 8.2MHz/58KHz  
Spec: Dual Alarm/Trippl Alarm  
Dimension: 50mmx35mm  
Color: Black/Gray/White or Customized  
Lock: Magnetic Lock  
Packing: Customized



**T-116(Multi Self Alarming Tag)**

Frequency: 58KHz  
Spec: Dual Alarm/Trippl Alarm  
Dimension: 75mmx33mm  
Color: Black/Gray/White or Customized  
Lock: Magnetic Lock  
Packing: 100pcs/ctn, 0.029cbm(44x31x21cm), 4.6kg



**T-120(Retractable Box Guard)**

Frequency: 8.2MHz/58KHz  
Spec: Dual Alarm/Trippl Alarm  
Dimension: Ø60mm  
Color: Gray/White/Black or customized  
Lock: Magnetic Lock  
Packing: 50pcs/ctn, 0.017cbm(37x37x12.5cm), 5.4kg





**T-001(Mini Square)**

Frequency: 8.2MHz  
Dimension: 48mmx42mm/44mmx38mm  
Color: Black/Gray/White or Customized  
Lock: Magnetic Lock  
Packing: 1,000pcs/ctn, 0.028cbm(50X35X16cm), 11kg



**T-001B(New Mini Square)**

Frequency: 8.2MHz  
Dimension: 52mmx43mm  
Color: Black/Gray/White or Customized  
Lock: Magnetic Lock  
Packing: 1,000pcs/ctn, 0.031cbm(59x40x13cm), 12kg



**T-001C(Duplex Mini Square)**

Frequency: 8.2MHz  
Dimension: 52mmx43mm  
Color: Black/Gray/White or Customized  
Lock: Magnetic Lock  
Packing: 1,000pcs/ctn, 0.031cbm(59x40x13cm), 12kg



**T-001D(Sidep Mini Square)**

Frequency: 8.2MHz  
Dimension: 48mmx42mm  
Color: Black/Gray/White or Customized  
Lock: Magnetic Lock  
Packing: 1,000pcs/ctn, 0.031cbm(59x40x13cm), 11kg



**T-001E(Tiny Square)**

Frequency: 8.2MHz  
Dimension: 41mmx35mm  
Color: Black/Gray/White or Customized  
Lock: Magnetic Lock  
Packing: 1,000pcs/ctn, 0.031cbm(59x40x13cm), 9kg



**T-001F(Flat Square)**

Frequency: 8.2MHz/58KHz  
Dimension: 51mmx25mm  
Color: Black/Gray/White or Customized  
Lock: Magnetic Lock  
Packing: 1,000pcs/ctn, 0.031cbm(59x40x13cm), 11kg

Hard Tag





**T-001G(Vertical Square)**

Frequency: 8.2MHz/58KHz  
Dimension: 51mmx25mm  
Color: Black/Gray/White or Customized  
Lock: Magnetic Lock  
Packing: 1,000pcs/ctn, 0.03cbm(59x40x13cm), 12kg



**T-001H(Super Square)**

Frequency: 8.2MHz  
Dimension: 66mmx30mm  
Color: Black/Gray/White or Customized  
Lock: Magnetic Lock  
Packing: 1,000pcs/ctn, 0.040cbm(44x33x24cm), 15kg



**T-002(Large Square)**

Frequency: 8.2MHz  
Dimension: 70mmx58mm  
Color: Black/Gray/White or Customized  
Lock: Magnetic Lock  
Packing: 500pcs/ctn, 0.031cbm(59x40x13cm), 9kg



**T-003(Mini Cone)**

Frequency: 8.2MHz  
Dimension: Ø45mm  
Color: Black/Gray/White or Customized  
Lock: Magnetic Lock  
Packing: 1,000pcs/ctn, 0.031cbm(59x40x13cm), 10kg



**T-004 (Sunflower)**

Frequency: 8.2MHz  
Dimension: Ø42mm  
Color: Black/Gray/White or Customized  
Lock: Magnetic Lock  
Packing: 1,000pcs/ctn, 0.026cbm(59x40x11cm), 10kg



**T-005(Large Cone)**

Frequency: 8.2MHz  
Dimension: Ø63mm  
Color: Black/Gray/White or Customized  
Lock: Magnetic Lock  
Packing: 500pcs/ctn, 0.04cbm(59x40x17cm), 8kg



**T-005B(New Large Cone)**

Frequency: 8.2MHz  
 Dimension: Ø63mm  
 Color: Black/Gray/White or Customized  
 Lock: Magnetic Lock  
 Packing: 500pcs/ctn, 0.035cbm(59x40x15cm), 8kg



**T-006(Bell 30)**

Frequency: 8.2MHz  
 Dimension: Ø30mm  
 Color: Black/Gray/White or Customized  
 Lock: Magnetic Lock  
 Packing: 1,000pcs/ctn, 0.020cbm(40x30x17cm), 9kg



**T-006B(Bell 34 with hole)**

Frequency: 8.2MHz  
 Dimension: Ø34mm  
 Color: Black/Gray/White or Customized  
 Lock: Magnetic Lock  
 Packing: 1,000pcs/ctn, 0.020cbm(40x30x17cm), 9kg



**T-006C(Tiny 30)**

Frequency: 8.2MHz  
 Dimension: Ø34mm  
 Color: Black/Gray/White or Customized  
 Lock: Magnetic Lock  
 Packing: 1,000pcs/ctn, 0.03cbm(58.5x39x13cm), 8kg



**T-008(R50)**

Frequency: 8.2MHz//58KHz  
 Dimension: Ø50mm  
 Color: Black/Gray/White or Customized  
 Lock: Magnetic Lock  
 Packing: 1,000pcs/ctn, 0.040cbm(59x40x17cm), 11kg



**T-008B(R50 Light)**

Frequency: 8.2MHz  
 Dimension: Ø50mm  
 Color: Black/Gray/White or Customized  
 Lock: Magnetic Lock  
 Packing: 1,000pcs/ctn, 0.040cbm(59x40x17cm), 11kg



**T-008C(New R50)**

Frequency: 8.2MHz  
Dimension: Ø50mm  
Color: Black/Gray/White or Customized  
Lock: Magnetic Lock  
Packing: 1,000pcs/ctn, 0.040cbm(59x40x17cm), 11kg



**T-008D(R50 Dome)**

Frequency: 8.2MHz  
Dimension: Ø50mm  
Color: Black/Gray/White or Customized  
Lock: Magnetic Lock  
Packing: 1,000pcs/ctn, 0.04cbm(59x39x18cm), 13kg



**T-008E(R50 Dome)**

Frequency: 58KHz/8.2MHz/Dual  
Dimension: Ø55mm  
Color: Black/Gray/White or Customized  
Lock: Magnetic Lock  
Packing: 1,000pcs/ctn, 0.043cbm(46x36x26cm), 13kg



**T-008F(Super R50)**

Frequency: 8.2MHz  
Dimension: Ø50mm  
Color: Black/Gray/White or Customized  
Lock: Magnetic Lock  
Packing: 1,000pcs/ctn, 0.031cbm(40x32x25cm), 13kg



**T-009(R60)**

Frequency: 8.2MHz  
Dimension: Ø60mm  
Color: Black/Gray/White or Customized  
Lock: Magnetic Lock  
Packing: 500pcs/ctn, 0.041cbm(59x39x18cm), 10kg



**T-010(Alpha)**

Frequency: 8.2MHz  
Dimension: Ø65mm  
Color: Black/Gray/White or Customized  
Lock: Magnetic Lock  
Packing: 500pcs/ctn, 0.041cbm(59x39x18cm), 9kg



**T-010B(Midi Alpha)**

Frequency: 8.2MHz  
 Dimension: Ø50mm  
 Color: Black/Gray/White or Customized  
 Lock: Magnetic Lock  
 Packing: 500pcs/ctn, 0.031cbm(59x40x13cm), 8kg



**T-010C(Mini Alpha)**

Frequency: 8.2MHz  
 Dimension: Ø40mm  
 Color: Black/Gray/White or Customized  
 Lock: Magnetic Lock  
 Packing: 1,000pcs/ctn, 0.040cbm(59x40x17cm), 13kg



**T-011(Mini Golf)**

Frequency: 8.2MHz/58KHz  
 Dimension: Ø45mm  
 Color: Black/Gray/White or Customized  
 Lock: Magnetic Lock  
 Packing: 1,000pcs/ctn, 0.040cbm(59x40x17cm), 12kg



**T-012F(Flat Midi Golf)**

Frequency: 8.2MHz/58KHz  
 Dimension: Ø53mm  
 Color: Black/Gray/White or Customized  
 Lock: Magnetic Lock  
 Packing: 500pcs/ctn, 0.027cbm(59x40x12cm), 8kg



**T-012G(Groove Midi Golf)**

Frequency: 8.2MHz/58KHz  
 Dimension: Ø53mm  
 Color: Black/Gray/White or Customized  
 Lock: Magnetic Lock  
 Packing: 500pcs/ctn, 0.027cbm(59x40x12cm), 8kg



**T-012S(Smooth Midi Golf)**

Frequency: 58KHz/8.2MHz  
 Dimension: Ø53mm  
 Color: Black/Gray/White or Customized  
 Lock: Magnetic Lock  
 Packing: 500pcs/ctn, 0.027cbm(59x40x12cm), 8kg

Hard Tag





**T-013G(Groove Large Golf)**

Frequency: 58KHz/8.2MHz  
Dimension: Ø64mm  
Color: Black/Gray/White or Customized  
Lock: Magnetic Lock  
Packing: 500pcs/ctn, 0.035cbm(59x40x15cm), 11kg



**T-013S(Smooth Large Golf)**

Frequency: 8.2MHz/58KHz  
Dimension: Ø64mm  
Color: Black/Gray/White or Customized  
Lock: Magnetic Lock  
Packing: 500pcs/ctn, 0.035cbm(59x40x15cm), 11kg



**T-014(Mini UFO)**

Frequency: 8.2MHz  
Dimension: Ø48mm  
Color: Black/Gray/White or Customized  
Lock: Magnetic Lock  
Packing: 1,000pcs/ctn, 0.031cbm(59x40x13cm), 11kg



**T-015(Delta)**

Frequency: 8.2MHz  
Dimension: Ø50mm  
Color: Black/Gray/White or Customized  
Lock: Magnetic Lock  
Packing: 1,000pcs/ctn, 0.038cbm(59x40x16cm), 12kg



**T-016(Tao 40)**

Frequency: 8.2MHz  
Dimension: Ø40mm  
Color: Black/Gray/White or Customized  
Lock: Magnetic Lock  
Packing: 1,000pcs/ctn, 0.031cbm(59x40x13cm), 11kg



**T-016B(Tiny 40)**

Frequency: 8.2MHz  
Dimension: Ø38mm  
Color: Black/Gray/White or Customized  
Lock: Magnetic Lock  
Packing: 1,000pcs/ctn, 0.031cbm(59x40x13cm), 11kg



**T-016C(X40)**

Frequency: 8.2MHz  
Dimension: Ø40mm  
Color: Black/Gray/White or Customized  
Lock: Magnetic Lock  
Packing: 1,000pcs/ctn, 0.031cbm(59x40x13cm), 11kg



**T-016D(New Tao 40)**

Frequency: 8.2MHz  
Dimension: Ø40mm  
Color: Black/Gray/White or Customized  
Lock: Magnetic Lock  
Packing: 1,000pcs/ctn, 0.031cbm(59x40x13cm), 11kg



**T-017(Tao 50)**

Frequency: 8.2MHz/58KHz  
Dimension: Ø50mm  
Color: Black/Gray/White or Customized  
Lock: Magnetic Lock  
Packing: 500pcs/ctn, 0.026cbm(59x40x11cm), 9kg



**T-017B(New Tao 50)**

Frequency: 8.2MHz/58KHz  
Dimension: Ø50mm  
Color: Black/Gray/White or Customized  
Lock: Magnetic Lock  
Packing: 500pcs/ctn, 0.026cbm(59x40x11cm), 9kg



**T-017C(X50)**

Frequency: 8.2MHz/58KHz  
Dimension: Ø50mm  
Color: Black/Gray/White or Customized  
Lock: Magnetic Lock  
Packing: 500pcs/ctn, 0.031cbm(59x40x13cm), 9kg



**T-017D(Tao 60)**

Frequency: 8.2MHz/58KHz  
Dimension: Ø60mm  
Color: Black/Gray/White or Customized  
Lock: Magnetic Lock  
Packing: 500pcs/ctn, 0.040cbm(59x40x17cm), 10kg

Hard Tag



**T-018(Super Round)**

Frequency: 8.2MHz  
Dimension: Ø48mm  
Color: Black/Gray/White or Customized  
Lock: Magnetic Lock  
Packing: 1,000pcs/ctn, 0.035cbm(59x40x15cm), 12kg



**T-019(SST Tag)**

Frequency:8.2MHz  
Dimension: 55mmx20mm  
Color: Black/Gray/White or Customized  
Lock: Magnetic Lock  
Packing: 1,000pcs/ctn, 0.017cbm(42x28x15cm), 8kg



**T-020 (Teardrop)**

Frequency: 8.2MHz/58KHz/66KHz  
Dimensions: 55mmx40mm x20mm  
Color: Beige or customized  
Lock: Three balls, standard/super  
Packing: 1,000pcs/ctn, 0.034cbm(59x40x13cm), 12kg



**T-022(Mini Round)**

Frequency: 8.2MHz  
Dimension: Ø42mm  
Color: Black/Gray/White or Customized  
Lock: Magnetic Lock  
Packing: 1,000pcs/ctn, 0.031cbm(59x40x13cm), 10kg



**T-024 (Mini Bomba)**

Frequency: 58KHz/8.2MHz  
Dimension: Ø42mm  
Color: Black/Gray/White or Customized  
Lock: Magnetic Lock  
Packing: 1,000pcs/ctn, 0.033cbm(59x40x14cm), 12kg



**T-025 (Bomba)**

Frequency: 58KHz/8.2MHz  
Dimension: Ø55mm  
Color: Black/Gray/White or Customized  
Lock: Magnetic Lock  
Packing: 500pcs/ctn, 0.031cbm(59x40x13cm), 9kg



**T-031(Mini Pencil)**

Frequency:58KHz/8.2MHz  
Dimension: 46mmx13mm  
Color: Black/Gray/White or Customized  
Lock: Magnetic Lock  
Packing: 1,000pcs/ctn, 0.017cbm(40x30x14cm), 7kg



**T-031B(Round Mini Pencil)**

Frequency:58KHz/8.2MHz  
Dimension: 46mmx13mm  
Color: Black/Gray/White or Customized  
Lock: Magnetic Lock  
Packing: 1,000pcs/ctn, 0.017cbm(40x30x14cm), 9kg



**T-031C(Micro Pencil)**

Frequency: 58KHz/8.2MHz  
Dimension: 42mmx15mm  
Color: Black/Gray/White or Customized  
Lock: Magnetic Lock  
Packing: 1,000pcs/ctn, 0.017cbm(40x30x14cm), 10kg



**T-032(Midi Pencil)**

Frequency:58KHz/8.2MHz  
Dimension: 55mmx13mm/51mmx13mm  
Color: Black/Gray/White or Customized  
Lock: Magnetic Lock  
Packing: 1,000pcs/ctn, 0.018cbm(40x30x15cm), 10kg



**T-032B(Round Midi Pencil)**

Frequency:58KHz/8.2MHz  
Dimension: 51mmx13mm  
Color: Black/Gray/White or Customized  
Lock: Magnetic Lock  
Packing: 1,000pcs/ctn, 0.018cbm(40x30x15cm), 10kg



**T-032C(Super Pencil)**

Frequency: 58KHz/8.2MHz  
Dimension: 61mmx20mm  
Color: Black/Gray/White or Customized  
Lock: Magnetic Lock  
Packing: 1,000pcs/ctn, 0.023cbm(40x30x19cm), 12kg

Hard Tag





**T-032D(Flat Midi Pencil)**

Frequency:58KHz/8.2MHz  
Dimension: 51mmx13mm  
Color: Black/Gray/White or Customized  
Lock: Magnetic Lock  
Packing: 1,000pcs/ctn, 0.018cbm(40x30x15cm), 11kg



**T-032E(Universal Pencil)**

Frequency:58KHz/8.2MHz  
Dimension:64mmx15mm/72mmx15mm  
Color: Black/Gray/White or Customized  
Lock: Magnetic Lock  
Packing: 1,000pcs/ctn, 0.025cbm(40x30x21cm), 12kg



**T-033(Large Pencil)**

Frequency:58KHz/8.2MHz  
Dimension: 68mmx23mm  
Color: Black/Gray/White or Customized  
Lock: Magnetic Lock  
Packing: 1,000pcs/ctn, 0.026cbm(59x40x11cm), 13kg



**T-033B(New Large Pencil)**

Frequency:58KHz/8.2MHz  
Dimension: 72mmx25mm  
Color: Black/Gray/White or Customized  
Lock: Magnetic Lock  
Packing: 1,000pcs/ctn, 0.031cbm(59x40x13cm), 13kg



**T-034(Bestag)**

Frequency:58KHz/8.2MHz  
Dimension: 50mmx25mm  
Color: Black/Gray/White or Customized  
Lock: Magnetic Lock  
Packing: 1,000pcs/ctn, 0.03cbm(59x39x13cm), 11kg



**T-034B (New Bestag)**

Frequency:58KHz/8.2MHz  
Dimension: 68mmx25mm  
Color: Black/Gray/White or Customized  
Lock: Magnetic Lock  
Packing: 1,000pcs/ctn, 0.033cbm(59x40x14cm), 13kg



**T-035(Pencil with Lanyard)**

Frequency:58KHz/8.2MHz  
 Dimension: 55mmx12mm/46mmx12mm  
 Color: Black/Gray/White or Customized  
 Lock: Magnetic Lock  
 Packing: 1,000pcs/ctn, 0.02cbm(40x30x17cm), 9kg



**T-035B(Mini Detachable Pencil)**

Frequency: 8.2MHz/58KHz  
 Dimension: 46mmx14mm  
 Color: Black/Gray/White or Customized  
 Lock: Magnetic Lock  
 Packing: 1,000pcs/ctn, 0.023cbm(40x30x19cm), 11kg



**T-035C(Detachable Pencil)**

Frequency: 58KHz/8.2MHz  
 Dimension: 55mm or 46mm  
 Color: Black/Gray/White or Customized  
 Lock: Magnetic Lock  
 Packing: 1,000pcs/ctn, 0.03cbm(59x39x13cm), 12kg



**T-035D(SST with Ly)**

Frequency:8.2MHz  
 Dimension: 59mmx26mm/55mmx23mm  
 Color: Black/Gray/White or Customized  
 Lock: Magnetic Lock  
 Packing: 1,000pcs/ctn, 0.031cbm(59x40x13cm), 9kg



**T-036(SPL Tag II)**

Frequency:58KHz  
 Dimension: 84mmx30mm  
 Color: Black/Gray/White or Customized  
 Lock: Steel Plate Lock  
 Packing: 1,000pcs/ctn, 0.040cbm(59x40x17cm), 13kg



**T-036B(SPL Tag)**

Frequency:58KHz  
 Dimension: 88mmx30mm  
 Color: Black/Gray/White or Customized  
 Lock: Steel Plate Lock  
 Packing: 1,000pcs/ctn, 0.047cbm(59x40x20cm), 14kg

Hard Tag



**T-036C(Mini SPL Tag)**

Frequency:58KHz  
Dimension: 54mmx32mm  
Color: Black/Gray/White or Customized  
Lock: Steel Plate Lock  
Packing: 1,000pcs/ctn, 0.033cbm(59x40x14cm), 12kg



**T-036D(SPL Tag III)**

Frequency:58KHz  
Dimension: 69mmx30mm/76mmx30mm  
Color: Black/Gray/White or Customized  
Lock: Steel Plate Lock  
Packing: 1,000pcs/ctn, 0.040cbm(59x40x17cm), 10kg



**T-036E(SPL Tag III with Ly)**

Frequency:58KHz  
Dimension: 69mmx30mm  
Color: Black/Gray/White or Customized  
Lock: Steel Plate Lock  
Packing: 1,000pcs/ctn, 0.040cbm(59x40x17cm), 13kg



**T-036G(VSPL Tag)**

Frequency:58KHz  
Dimension: 55mmx31mm  
Color: Black/Gray/White or Customized  
Lock: Steel Plate Lock  
Packing: 1,000pcs/ctn, 0.029cbm(40x30x14cm), 9kg



**T-037(Large Gator)**

Frequency:58KHz  
Dimension: 96mmx28mm  
Color: Black/Gray/White or Customized  
Lock: Steel Plate Lock  
Packing: 1,000pcs/ctn, 0.040cbm(59x40x17cm), 12kg



**T-037B(Micro Gator)**

Frequency:58KHz  
Dimension:75mmx28mm/82mmx28mm  
Color: Black/Gray/White or Customized  
Lock: Steel Plate Lock  
Packing: 1,000pcs/ctn, 0.031cbm(59x40x13cm), 11kg



**T-037C(Clutch Tag)**

Frequency:58KHz/8.2MHz  
Dimension: 60mmx20mm  
Color: Gray/White or Customized  
Lock: Magnetic Lock  
Packing: 1,000pcs/ctn, 0.031cbm(59x40x13cm), 13kg



**T-037D(Half Moon)**

Frequency: 58KHz  
Dimension: 60mmx17mm  
Color: Black/Gray/White or Customized  
Lock: Magnetic Lock  
Packing: 1,000pcs/ctn, 0.024cbm(49x33x15cm), 11kg



**T-038(Apparel Tag)**

Frequency: 58KHz/8.2MHz  
Dimension:60mmx20mm  
Color: Black/Gray/White or Customized  
Lock: Magnetic Lock  
Packing: 1,000pcs/ctn, 0.031cbm(59x40x13cm), 9kg



**T-038B(Fish Tag)**

Frequency: 58KHz/8.2MHz  
Dimension:59mmx18mm  
Color: Black/Gray/White or Customized  
Lock: Magnetic Lock  
Packing: 1,000pcs/ctn, 0.031cbm(59x40x13cm), 9kg



**T-038C(Fish Tag with Ly)**

Frequency: 58KHz/8.2MHz  
Dimension:59mmx18mm  
Color: Black/Gray/White or Customized  
Lock: Magnetic Lock  
Packing: 1,000pcs/ctn, 0.031cbm(59x40x13cm), 9kg



**T-039(Xpencil)**

Frequency:58KHz/8.2MHz  
Dimension: 31mmx32mm  
Color: Black/Gray/White or Customized  
Lock: Magnetic Lock  
Packing: 1,000pcs/ctn, 0.018cbm(40x30x15cm), 10kg





**T-039B(Napolean)**

Frequency:58KHz/8.2MHz  
Dimension: 45mmx35mm  
Color: Black/Gray/White or Customized  
Lock: Magnetic Lock  
Packing: 1,000pcs/ctn, 0.041cbm(59x39x18cm), 11kg



**T-039C(Pearl)**

Frequency:58KHz/8.2MHz  
Dimension: 28mmx21mm  
Color: Black/Gray/White or Customized  
Lock: Magnetic Lock  
Packing: 1,000pcs/ctn, 0.018cbm(40x30x15cm), 8kg



**T-039D(Pearl with Ly)**

Frequency:58KHz/8.2MHz  
Dimension: 28mmx21mm  
Color: Black/Gray/White or Customized  
Lock: Magnetic Lock  
Packing: 1,000pcs/ctn, 0.018cbm(40x30x15cm), 9kg



**T-039E(Ear Tag with Ly)**

Frequency:58KHz/8.2MHz  
Dimension: 28mmx21mm  
Color: Black/Gray/White or Customized  
Lock: Magnetic Lock  
Packing: 1,000pcs/ctn, 0.018cbm(40x30x15cm), 9kg



**T-040(Reusable VSPL)**

Frequency:58KHz  
Dimension: 58mmx30mm  
Color: Black/Gray/White or Customized  
Lock: Steel Plate Lock  
Packing: 1,000pcs/ctn, 0.031cbm(59x40x13cm), 9kg



**T-040B(New Reusable VSPL)**

Frequency:58KHz  
Dimension: 60mmx31mm  
Color: Black/Gray/White or Customized  
Lock: Steel Plate Lock  
Packing: 1,000pcs/ctn, 0.031cbm(59x40x13cm), 9kg



### T-041(Dual SPL Tag)

Frequency:58KHz/8.2MHz  
Dimension: 62mmx30mm  
Color: Black/Gray/White or Customized  
Lock: Steel Plate Lock/Magnetic Lock  
Packing: 1,000pcs/ctn, 0.037cbm(45x33x25cm), 14kg



### T-042(Clothes Tag)

Frequency:58KHz  
Dimension:67mmx22mm  
Color: Black/Gray/White or Customized  
Lock: Magnetic Lock  
Packing: 1,000pcs/ctn, 0.028cbm(32x32x27cm),8kg



### T-043(Clothes Tag)

Frequency:58KHz  
Dimension:60mmx25mm  
Color: Black/Gray/White or Customized  
Lock: Magnetic Lock  
Packing: 1,000pcs/ctn, 0.028cbm(32x32x27cm),8kg



### T-044(Anti-shoplifting Tag)

Frequency:58KHz/8.2MHz  
Dimension:55mmx20mm  
Color: Black/Gray/White or Customized  
Lock: Magnetic Lock  
Packing: 1,000pcs/ctn, 0.048cbm(32x36x42cm), 15kg



### T-045(Clip Tag)

Frequency: 58KHz/8.2MHz  
Dimension:72mmx37mm  
Color: Black/Red/White or Customized  
Lock: Magnetic Lock  
Packing:Customized



### T-046(Golf Club Tag)

Frequency: 58kHz  
Dimension: 57mmx34mmx29mm  
Color: Black or customized  
Lock: Magnetic Lock  
Packing: 500pcs/ctn, 0.032cbm(59x40x13cm), 13kg



**B-001(Iron Mini Bottle)**

Frequency: 58KHz/8.2MHz  
Dimension: Ø36mm  
Color: Black/Gray/White or Customized  
Lock: Magnetic Lock  
Packing: 500pcs/ctn, 0.029cbm(40x30x24cm), 10kg



**B-001B(Plastic Mini Bottle)**

Frequency: 58KHz/8.2MHz  
Dimension: Ø36mm  
Color: Black/Gray/White or Customized  
Lock: Magnetic Lock  
Packing: 250pcs/ctn, 0.025cbm(53x39x12cm), 6kg



**B-001C(Ultra Strip Bottle)**

Frequency: 58KHz  
Dimension: 45mmx36mm  
Color: Black/Gray/White or Customized  
Lock: Magnetic Lock  
Packing: 500pcs/ctn, 0.029cbm(40x30x24cm), 9kg



**B-002(Iron Round Bottle)**

Frequency: 8.2MHz  
Dimension: Ø56mm  
Color: Black/Gray/White or Customized  
Lock: Magnetic Lock  
Packing: 500pcs/ctn, 0.046cbm(50x35x26cm), 10kg



**B-002B(Plastic Round Bottle)**

Frequency: 8.2MHz  
Dimension: Ø56mm  
Color: Black/Gray/White or Customized  
Lock: Magnetic Lock  
Packing: 500pcs/ctn, 0.046cbm(50x35x26cm), 10kg



**B-004(Iron Tao Bottle)**

Frequency: 8.2MHz/58KHz  
Dimension: Ø50mm  
Color: Black/Gray/White or Customized  
Lock: Magnetic Lock  
Packing: 500pcs/ctn, 0.046cbm(50x35x26cm), 11kg



**B-005(Plastic Tao Bottle)**

Frequency: 8.2MHz/58KHz  
Dimension: Ø50mm  
Color: Black/Gray/White or Customized  
Lock: Magnetic Lock  
Packing: 500pcs/ctn, 0.046cbm(50x35x26cm), 11kg



**B-006(Mini Square Bottle)**

Frequency: 8.2MHz  
Dimension: 48mmx42mm  
Color: Black/Gray/White or Customized  
Lock: Magnetic Lock  
Packing: 250pcs/ctn, 0.036cbm(56x36x18cm), 12kg



**B-007(Iron R50 Bottle)**

Frequency: 8.2MHz/58KHz  
Dimension: Ø50mm  
Color: Black/Gray/White or Customized  
Lock: Magnetic Lock  
Packing: 500pcs/ctn, 0.046cbm(50x35x26cm), 11kg



**B-007B(Plastic R50 Bottle)**

Frequency: 8.2MHz/58KHz  
Dimension: Ø50mm  
Color: Black/Gray/White or Customized  
Lock: Magnetic Lock  
Packing: 500pcs/ctn, 0.046cbm(50x35x26cm), 10kg



**B-010(Can Clip)**

Frequency: 8.2MHz/58KHz  
Dimension: 68mmx41mm  
Color: Black/Gray or Customized  
Lock: Magnetic Lock  
Packing: 1,000pcs/ctn, 0.054cbm(50x35x31cm), 23kg



**B-011(Small Top Bottle)**

Frequency: 8.2MHz/58KHz  
Dimension: Ø37mmx46mm  
Color: Black or Customized  
Lock: Magnetic Lock  
Packing: 300pcs/ctn, 0.048cbm(42x35x33cm), 12kg





**B-012(Big Top Bottle)**

Frequency: 8.2MHz/58KHz  
 Dimension: Ø43mmx80mm  
 Color: Black or Customized  
 Lock: Magnetic Lock  
 Packing: 200pcs/ctn, 0.070cbm(50x37x38cm), 13kg



**B-013(Big Vega Tag)**

Frequency: 8.2MHz/58KHz  
 Dimension: Ø140mmx33mm(Between 127mm to 129mm)  
 Color: White or Customized  
 Lock: Magnetic Lock  
 Packing: 100pcs/ctn, 0.068cbm(70x34x28.5cm), 14kg



**B-013B(Small Vega Tag)**

Frequency: 8.2MHz/58KHz  
 Dimension: Ø113mmx33mm(Between 99mm to 100mm)  
 Color: White or Customized  
 Lock: Magnetic Lock  
 Packing: 100pcs/ctn, 0.050cbm(58x35x24.5cm), 10kg



**B-014(Fireproof Bottle)**

Frequency: 58KHz/8.2MHz  
 Dimension: Ø52mm  
 Color: White or Customized  
 Lock: Magnetic Lock  
 Packing: 250pcs/ctn, 0.024cbm(40x30x20cm), 8kg



**B-014B(Fireproof Mini Bottle)**

Frequency: 58KHz/8.2MHz  
 Dimension: Ø36mm  
 Color: Black/Gray/White or Customized  
 Lock: Magnetic Lock  
 Packing: 250pcs/ctn, 0.025cbm(53x39x12cm), 6kg



**B-015(Handcuff Bottle Tag)**

Frequency: 58KHz/8.2MHz  
 Dimension: Ø50mm  
 Color: Black/Gray/White or Customized  
 Lock: Magnetic Lock  
 Packing: 500pcs/ctn, 0.035cbm(40x32x27cm), 17kg



**B-015B(Multi-Purpose)**

Frequency: 58KHz/8.2MHz  
 Dimension: Ø55mm  
 Color: Black/Gray/White or Customized  
 Lock: Magnetic Lock  
 Packing: 500pcs/ctn, 0.035cbm(40x32x27cm), 17kg



**B-016(Big One-off Vega Tag)**

Outer Dimension:Ø132mm  
 Inner Dimension:Ø129mm  
 Color: Black/Gray/White or Customized  
 Packing: Customized



**B-016B(Tiny One-off Vega Tag)**

Outer Dimension:Ø105mm  
 Inner Dimension:Ø102mm  
 Color: Black/Gray/White or Customized  
 Packing: Customized



**B-016C(Clear One-off Vega Tag)**

Outer Dimension:Ø132mm  
 Inner Dimension:Ø129mm  
 Color: Black/Gray/White or Customized  
 Packing: Customized



**B-017(Bottle Cap)**

Frequency: 8.2MHz/58KHz  
 Dimension: Ø38mmx82mm  
 Color: Black or Customized  
 Lock: Magnetic Lock  
 Packing: 100pcs/ctn, 0.042cbm(49x34x25cm), 9kg



**B-018(Alarming Can Tag)**

Outer Dimension:Ø136mm  
 Inner Dimension:Ø132mm  
 Height Dimension:215mm  
 Color: Black/Gray/White or Customized  
 Packing: Customized



**I-001(Oval Ink Pin)**

Dimension: 42mmx28mm  
Color: White/Yellow/Transparent or Customized  
Packing: 1,000pcs/ctn, 0.03cbm(59x40x13cm), 6kg



**I-001B(Curved Ink Pin)**

Dimension: 42mmx28mm  
Color: White/Yellow/Transparent or Customized  
Packing: 1,000pcs/ctn, 0.03cbm(59x40x13cm), 9kg



**I-001C(Square Ink Pin)**

Dimension: 45mmx28mm  
Color: White/Yellow/Transparent or Customized  
Packing: 1,000pcs/ctn, 0.02cbm(40x30x17cm), 8kg



**I-001E(Hexagonal Ink Pin)**

Dimension: 41mmx26mm  
Color: Beige/Gray/ or Customized  
Packing: 1,000pcs/ctn, 0.023cbm(41x25x22cm),8kg



**I-002(Round Ink Pin)**

Dimension: Ø35mm  
Color: Yellow/Blue/Transparent or Customized  
Packing: 1,000pcs/ctn, 0.03cbm(59x39x13cm), 8kg



**I-002B(Oblong Ink Pin)**

Dimension: 55mmx25mm  
Color: Black/Gray/White or Customized  
Packing: 1,000pcs/ctn, 0.031cbm(43x29x25cm),7kg



**I-003(Global Ink Pin)**

Dimension: Ø46.5mm  
 Color: Green/Red or Customized  
 Packing: 1,000pcs/ctn, 0.03cbm(59x39x13cm), 8kg



**I-004(Tao60 Ink Tag)**

Frequency: 58KHz/8.2MHz  
 Dimension: Ø60mm  
 Color: Black/Gray/White or Customized  
 Lock: Magnetic Lock  
 Packing: 500pcs/ctn, 0.045cbm(61x61x12cm), 10kg



**I-005(Golf Ink Tag)**

Frequency: 58KHz/8.2MHz  
 Dimension: Ø55mm  
 Color: Black/Gray/White or Customized  
 Lock: Magnetic Lock  
 Packing: 500pcs/ctn, 0.027cbm(59x40x12cm), 11kg



**I-005B(Clear Golf Ink Tag)**

Frequency: 58KHz/8.2MHz  
 Dimension: Ø55mm  
 Color: Transparent or Customized  
 Lock: Magnetic Lock  
 Packing: 500pcs/ctn, 0.027cbm(59x40x12cm), 11kg



**I-006(R50 Ink Tag)**

Frequency: 8.2MHz  
 Dimension: Ø50mm  
 Color: Black/Gray/White or Customized  
 Lock: Magnetic Lock  
 Packing: 500pcs/ctn, 0.028cbm(38x29x25cm), 8kg



**I-006B(New R50 Ink Tag)**

Frequency: 8.2MHz/58KHz  
 Dimension: Ø50mm  
 Color: Black/Gray/White or Customized  
 Lock: Magnetic Lock  
 Packing: 1,000pcs/ctn, 0.051cbm(41x28x45cm), 15kg





**I-007(Mini Round Ink Pin)**

Dimension: Ø25mm  
 Color: Red/Blue/Yellow/Green or Customized  
 Packing: 2,000pcs/ctn, 0.020cbm(40x30x17cm), 7kg



**I-008(Just Ink Tag)**

Frequency: 58KHz  
 Dimension: Ø40mm  
 Color: Red/Blue/Yellow/Green or Customized  
 Lock: Magnetic Lock  
 Packing: 1,000pcs/ctn, 0.036cbm(46X30X26cm), 11kg



**I-009(Clutch Ink Pin)**

Dimension: Ø40mm  
 Color: Red/Blue/Yellow/Green or Customized  
 Packing: 1,000pcs/ctn, 0.025cbm(39X27X24cm), 7kg



**I-011(Flat Golf Ink Tag)**

Frequency: 58KHz/8.2MHz  
 Dimension: Ø45mm  
 Color: Black/Gray/White or Customized  
 Lock: Magnetic Lock  
 Packing: 1,000pcs/ctn, 0.051cbm(41x28x45cm), 15kg



**I-014(Mini Bomba Ink Tag)**

Frequency: 8.2MHz  
 Dimension: Ø42mm  
 Color: Black/Gray/White or Customized  
 Lock: Magnetic Lock  
 Packing: 1,000pcs/ctn, 0.033cbm(59x40x14cm), 14kg



**I-015(Universal Ink Tag)**

Frequency: 58KHz  
 Dimension: Ø51mm  
 Color: Black/Gray/White or Customized  
 Lock: Magnetic Lock  
 Packing: 500pcs/ctn, 0.031cbm(59x40x13cm), 10kg



**T-101(Blister Tag)**

Frequency: 58KHz/8.2MHz  
Dimension: 55mmx55mm  
Color: Gray/White or Customized  
Lock: Magnetic Lock  
Packing: 500pcs/ctn, 0.041cbm(59x39x18cm), 11kg



**T-102(Optical Tag)**

Frequency: 58KHz/8.2MHz  
Dimension: 25mmx25mm  
Color: Gray/White or Customized  
Lock: Mechanic Lock  
Packing: 1,000pcs/ctn, 0.02cbm(40x30x17cm), 10kg



**T-102B(Optical Tag)**

Frequency: 58KHz/8.2MHz  
Dimension: 36mmx28mm  
Color: Gray/White or Customized  
Lock: Mechanic Lock  
Packing: 1,000pcs/ctn, 0.02cbm(40x30x17cm), 10kg



**T-103(Screw Releaser)**

Dimension: 9cm in length  
Color: Gray/White or Customized  
Packing: 500pcs/ctn, 0.031cbm(59x40x13cm), 5kg



**T-106(Hammer Optical Tag)**

Frequency: 58KHz/8.2MHz  
Dimension: 52mmx31mm  
Color: Gray/White or Customized  
Lock: Magnetic Lock  
Packing: 1,000pcs/ctn, 0.026cbm(40x30x22cm), 13kg



**T-108B(Jewelry Tag)**

Frequency: 58KHz/8.2MHz  
Dimension: 28.5mmx11mmx13mm  
Color: White/Beige/Gray or Customized  
Packing: 5,000pcs/ctn, 0.023cbm(38x31x20cm), 21kg



### A-009(AM Label in Sheets)

Frequency: 58KHz  
Dimension: 45.21mmx10.67mm  
Color: White/Barcode/Black  
Packing: 20,000pcs/ctn, 0.032cbm(39x30x28cm), 15kg



### A-009B(AM Label in Rolls)

Frequency: 58KHz  
Dimension: 45.21mmx10.67mm  
Color: White/Barcode/Black  
Packing: 30,000pcs/ctn, 0.083cbm(58x58x25cm), 24kg



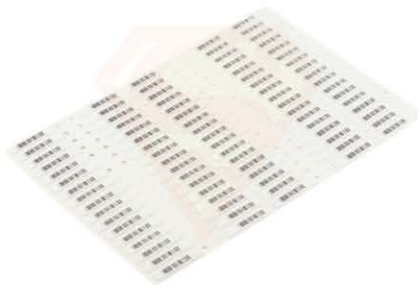
### A-009D(Microwave AM Label)

Frequency: 58KHz  
Dimension: 44.60mmx11.00mmx2.00mm  
Color: White/Barcode/Black  
Packing: 20,000pcs/ctn, 0.043cbm(39x30x38cm), 17kg  
Description: Designed for frozen meat products and apply to meat packaging. Pls remove AM labels before microwaved. Work well on liquids, foils and in metal shopping carts.



### A-009E(SPL AM Label)

Frequency: 58KHz  
Dimension: 44.60mmx12.26mmx1.80mm  
Color: White/Barcode/Black  
Packing: 17,600pcs/ctn, 0.035cbm(39x30x30cm), 13kg



### A-016(Round Hang Tag)

Frequency: 58KHz  
Dimension: 59mmx12mm  
Color: White/Barcode/Black  
Packing: 10,000pcs/ctn, 0.027cbm(46x19x31cm), 18kg



### A-016B(Insert Label)

Frequency: 58KHz  
Dimension: 48.8mmx11mmx1.8mm  
Color: White/Barcode/Black  
Packing: 20,000pcs/ctn, 0.032cbm(39x30x28cm), 15kg



**RF-101(Deactivate Paper)**

Frequency: N/A  
 Dimension: Customized  
 Color: Barcode/White/Black or Customized  
 Packing: 40,000pcs/ctn, 0.021cbm(30x30x24cm), 14kg



**RF-102(Jewelry/Glasses Label)**

Frequency: 8.2MHz  
 Spec: Deactivatable/Non-Deactivatable  
 Dimension: 30mmx30mm or Customized  
 Color: Barcode/White/Black/Transparent/Thermal  
 Packing: 20,000pcs/ctn, 0.019cbm(29x29x24cm), 10kg



**RF-103(Valentine's Label)**

Frequency: 8.2MHz/9.5MHz  
 Spec: Deactivatable/Non-Deactivatable  
 Dimension: 47mmx47mm  
 Color: Barcode/White/Black/Transparent/Thermal/Frozen Label or customized  
 Packing: 20,000pcs/ctn, 0.025cbm(31x31x27cm), 13kg



**RF-1552(Lipstick Label)**

Frequency: 8.2MHz  
 Spec: Deactivatable  
 Dimension: 15mmx52mm  
 Color: White/Transparent  
 Packing: 20,000pcs/ctn, 0.013cbm(35x35x12cm), 6kg



**RF-1965(Lipstick Label)**

Frequency: 8.2MHz  
 Spec: Deactivatable/Non-Deactivatable  
 Dimension: 19mmx65mm  
 Color: Transparent  
 Packing: 20,000pcs/ctn, 0.014cbm(31x31x15cm), 8kg



**RF-2347(Oval Label)**

Frequency: 8.2MHz  
 Spec: Deactivatable/Non-Deactivatable  
 Dimension: 23mmx47mm  
 Color: Barcode/White/Black/Transparent/Thermal or customized  
 Packing: 20,000pcs/ctn, 0.018cbm(26x26x27cm), 9kg

RF Label





**RF-2050(2X5 Label)**

Frequency: 8.2MHz  
Spec: Deactivatable/Non-Deactivatable  
Dimension: 20mmx50mm  
Color: Barcode/White/Black/Transparent/Thermal or customized  
Packing: 20,000pcs/ctn,0.015cbm(31x31x14cm), 8kg



**RF-3030(3X3 Label)**

Frequency: 8.2MHz  
Spec: Deactivatable/Non-Deactivatable  
Dimension: 30mmx33mm  
Color: Barcode/White/Black/Transparent/Thermal  
Packing: 20,000pcs/ctn,0.015cbm(28x28x19cm), 8kg



**RF-3030R(Round Label)**

Frequency: 8.2MHz  
Spec: Deactivatable/Non-Deactivatable  
Dimension: Ø30mm  
Color: Barcode/White/Black/Thermal  
Packing: 20,000pcs/ctn, 0.015cbm(27x27x21cm), 8kg



**RF-3040(3X4 Label)**

Frequency: 8.2MHz  
Spec: Deactivatable/Non-Deactivatable  
Dimension: 30mmx40mm  
Color: Barcode/White/Black/Transparent/Thermal  
Packing: 20,000pcs/ctn, 0.019cbm(29x29x24cm), 10kg



**RF-3040R(Oval Label)**

Frequency: 8.2MHz  
Spec: Deactivatable/Non-Deactivatable  
Dimension: 30mmx40mm  
Color: Barcode/White/Black/Transparent/Thermal  
Packing: 20,000pcs/ctn, 0.019cbm(29x29x24cm), 10kg



**RF-3050(3X5 Label)**

Frequency: 8.2MHz  
Spec: Deactivatable/Non-Deactivatable  
Dimension: 30mmx50mm  
Color: Barcode/White/Black/Transparent/Thermal  
Packing: 20,000pcs/ctn,0.019cbm(26x26x28cm), 10kg



### RF-3060(3X6 Label)

Frequency: 8.2MHz  
Spec: Deactivatable/Non-Deactivatable  
Dimension: 30mmx60mm  
Color: Barcode/White/Black/Transparent/Thermal  
Packing: 20,000pcs/ctn,0.025cbm(35x35x20cm), 14kg



### RF-4040(4X4 Label)

Frequency: 8.2MHz/9.5MHz  
Spec: Deactivatable/Non-Deactivatable  
Dimension: 40mmx40mm  
Color: Barcode/White/Black/Transparent/Thermal  
Packing: 20,000pcs/ctn,0.021cbm(30x30x24cm), 11kg



### RF-4040C(Capacitor Label)

Frequency: 8.2MHz/9.5MHz  
Spec: Deactivatable/Non-Deactivatable  
Dimension: 37mmx47mm  
Color: Barcode/White/Black or Customized  
Packing: 20,000pcs/ctn, 0.027cbm(47x33x18cm), 12kg



### RF-4040R(Round Label)

Frequency: 8.2MHz  
Spec: Deactivatable/Non-Deactivatable  
Dimension: Ø40mm  
Color: Barcode/White/Black/Transparent/Thermal  
Packing: 20,000pcs/ctn, 0.021cbm(30x30x24cm), 11kg



### RF-5050(5X5 Label)

Frequency: 8.2MHz  
Spec: Deactivatable/Non-Deactivatable  
Dimension: 48mmx50mm  
Color: Barcode/White/Black/Transparent/Thermal  
Packing: 20,000pcs/ctn,0.027cbm(32x32x26cm), 17kg



### RF-5070(5X7 Label)

Frequency: 8.2MHz  
Spec: Deactivatable/Non-Deactivatable  
Dimension: 50mmx70mm  
Color: Barcode/White/Black/Clear/Thermal  
Packing: 20,000pcs/ctn,0.027cbm(31x31x14cm), 18kg



**A-001(Large Square Card)**

Frequency: 8.2MHz  
Dimension: 70mmx61mm  
Packing: 2,500pcs/ctn, 0.046cbm(56x36x23cm), 17kg



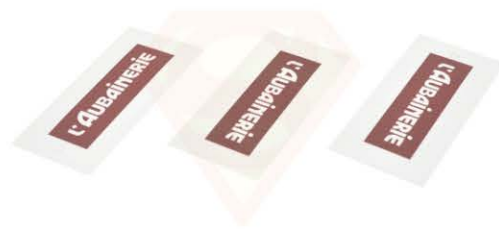
**A-003(Mini Square Card)**

Frequency: 8.2MHz  
Dimension: 52mmx45mm  
Packing: 5,000pcs/ctn, 0.046cbm(56x36x23cm), 18kg



**A-004(RF Paper Card)**

Frequency: 8.2MHz  
Dimension: 70mmx61mm  
Packing: Customized



**A-005(AM Paper Card)**

Frequency: 58KHz  
Dimension: 70mmx61mm  
Packing: 3,000pcs/ctn, 0.02cbm(20x32x32cm), 6kg



**A-007(AM Plastic Card)**

Frequency: 58KHz  
Dimension: 58mmx20mm  
Packing: 5,000pcs/ctn, 0.046cbm(56x36x23cm), 19kg



**A-008(Euro Card)**

Frequency: 8.2MHz  
Dimension: 86mmx60mm  
Packing: Customized



**A-011(Round Punch Tag)**

Frequency: 8.2MHz  
Dimension: 62mmx42mm  
Packing: 2,000pcs/ctn, 0.026cbm(30x21x42cm), 5kg



**A-012(Square Punch Tag)**

Frequency: 58KHz  
Dimension: 50mmx15mm  
Packing: 2,000pcs/ctn, 0.02cbm(35x25x23cm), 10kg



**A-013(AM Cloth Tag)**

Frequency: 58KHz  
Dimension: 65mmx28mm  
Packing: 7,000pcs/ctn, 0.026cbm(30x21x42cm), 5kg



**A-017(Strip Hang Tag)**

Frequency: 58KHz  
Dimension: 55mmx15mm  
Packing: Customized



**A-018(RF Cloth Tag)**

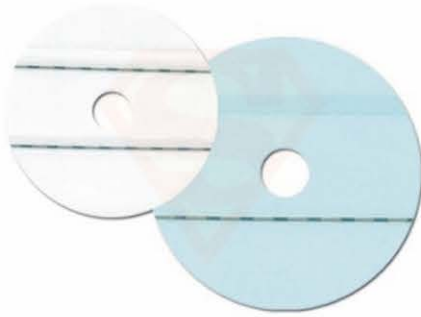
Frequency: 8.2MHz  
Dimension: 60mmx46mm  
Packing: 15,000pcs/ctn, 0.024cbm(30x50x16cm), 15kg



**A-022(Plastic Hang Tag)**

Frequency: 58KHz  
Dimension: 55mmx15mm  
Packing: 5,000pcs/ctn, 0.040cbm(59x40x17cm), 16kg





**EM-101(CD Label)**

Inner diameter: 2cm  
 Outer Diameter: 11.4cm  
 Strip Length : 10.3cm  
 Packing: 40,000pcs/ctn, 0.015cbm(32x28x16cm), 10kg



**EM-1040(10x40 Label)**

Frequency:100KC  
 Dimension:10MMx40MM  
 Packing: 40,000pcs/ctn, 0.015cbm(32x28x16cm), 10kg



**EM-1051(10x51 Label)**

Frequency:100KC  
 Dimension:10MMx51MM  
 Packing: 40,000pcs/ctn, 0.015cbm(32x28x16cm), 10kg



**EM-1063(10x63 Label)**

Frequency:100KC  
 Dimension:10MMx63MM  
 Packing: 40,000pcs/ctn, 0.015cbm(32x28x16cm), 10kg



**EM-1090(10x90 Label)**

Frequency:100KC  
 Dimension:10MMx90MM  
 Packing: 40,000pcs/ctn, 0.015cbm(32x28x16cm), 10kg



**SD-800(EM Deactivator)**

Frequency:100KC  
 Dimension:370mmx250mmx70mm, 360mmx170mmx180mm  
 Packing: 1pc/ctn, 0.015cbm(32x28x16cm), 10kg



**S-001(Shaver Safer) Inner:113x106x36mm**

Outer Dimension:138mmx112mmx39.6mm  
Inner Dimension:113mmx106mmx36mm  
Lock: Magnetic Lock  
Packing: 60pcs/ctn,0.0435cbm(62.5x29x24cm), 8kg



**S-001B(Shaver Safer) Inner:113x106x27mm**

Outer Dimension:138mmx112mmx30.6mm  
Inner Dimension:113mmx106mmx27mm  
Lock: Magnetic Lock  
Packing: 80pcs/ctn,0.0435cbm(62.5x29x24cm), 10kg



**S-001C(Shaver Safer) Inner:120x110x40mm**

Outer Dimension:147mmx115mmx45mm  
Inner Dimension:120mmx110mmx40mm  
Lock: Magnetic Lock  
Packing: Customized



**S-001D(Shaver Safer) Inner:120x110x28mm**

Outer Dimension:138.7mmx116mmx32mm  
Inner Dimension:120mmx110mmx28mm  
Lock: Magnetic Lock  
Packing: 100pcs/ctn,0.069cbm(53x30x43.5cm), 14kg



**S-001E(Shaver Safer) Inner:125x125x50mm**

Outer Dimension:140mmx131mmx76mm  
Inner Dimension:125mmx125mmx50mm  
Lock: Magnetic Lock  
Packing: Customized



**S-002(Single CD) Inner:126x144.6x12.5mm**

Outer Dimension:149mmx148mmx15.4mm  
Inner Dimension:126mmx144.6mmx12.5mm  
Lock: Magnetic Lock  
Packing: 200/ctn, 0.085cbm(54x34x46.5cm), 12.5kg

Safer



**S-004(PSP Box Safer)Inner:180x107x15mm**

Outer Dimension:203mmx112mmx19mm  
Inner Dimension:180mmx107mmx15mm  
Lock: Magnetic Lock  
Packing: 50pcs/ctn,0.026cbm(30x32x27cm),8kg



**S-004B(Single DVD)Inner:192x145x16mm**

Outer Dimension:215mmx150mmx20mm  
Inner Dimension:192mmx145mmx16mm  
Lock: Magnetic Lock  
Packing: 100pcs/ctn,0.082cbm(53.5x45.5x33.5cm),21kg



**S-004C(Double DVD)Inner:192x145x35mm**

Outer Dimension:215mmx150mmx39mm  
Inner Dimension:192mmx145mmx35mm  
Lock: Magnetic Lock  
Packing: 60pcs/ctn,0.089cbm(60x45x33cm), 15kg



**S-004D(Quadruple DVD)Inner:192x145x55mm**

Outer Dimension:215mmx150mmx59mm  
Inner Dimension:192mmx145mmx55mm  
Lock: Magnetic Lock  
Packing: 40pcs/ctn,0.089cbm(60x45x33cm), 12kg



**S-005(DVD Close)Inner:205x149x16mm**

Outer Dimension:230mmx156mmx22.6mm  
Inner Dimension:205mmx149mmx16mm  
Lock: Magnetic Lock  
Packing: 100pcs/ctn,0.098cbm(53x37x50cm),24.5kg



**S-005C(Super DVD)Inner:200x150x50mm**

Outer Dimension:230mmx157.5mmx55mm  
Inner Dimension:200mmx150mmx50mm  
Lock: Magnetic Lock  
Packing: 50pcs/ctn,0.115cbm(63x45.5x40cm), 16kg



**S-006(Single Battery) Inner:80x110x22mm**

Outer Dimension:160mmx114mmx26mm  
 Inner Dimension:80mmx110mmx22mm  
 Lock: Magnetic Lock  
 Packing:100pcs/ctn,0.053cbm(58x37x24.5cm),5kg



**S-007(Double Battery) Inner:80x110x36mm**

Outer Dimension:160mmx114mmx40mm  
 Inner Dimension:80mmx110mmx36mm  
 Lock: Magnetic Lock  
 Packing: 100pcs/ctn,0.073cbm(44.5x26.5x58.5cm), 10kg



**S-008(Cigarette) Inner:294x108x56mm**

Outer Dimension:356mmx112mmx60mm  
 Inner Dimension:294mmx108mmx56mm  
 Lock: Magnetic Lock  
 Packing:40pcs/ctn, 0.11cbm(53x37x58.5cm), 12kg



**S-008B(Cigarette) Inner:293x110x57mm**

Outer Dimension:335mmx115mmx75mm  
 Inner Dimension:293mmx110mmx57mm  
 Lock: Magnetic Lock  
 Packing:40pcs/ctn, 0.11cbm(53x37x58.5cm), 17kg



**S-009(Ink Jet) Inner:53.4x119x51.7mm**

Outer Dimension:141.4mmx123.4mmx75.7mm  
 Inner Dimension: 53.4mmx119mmx51.7mm  
 Lock: Magnetic Lock  
 Packing: 100pcs/ctn, 0.083cbm(44.5x37x51cm), 12kg



**S-010(MultiFunction) Inner:150.5x118.5x43.2mm**

Outer Dimension:231mmx122.6mmx50mm  
 Inner Dimension:150.5mmx118.5mmx43.2mm  
 Lock: Magnetic Lock  
 Packing: 100pcs/ctn,0.144cbm(56x40.5x63.5cm), 16.5kg





**S-010B(MultiFunction)Inner:97.6x78x42mm**

Outer Dimension:178mmx82.4mmx66.7mm  
Inner Dimension:97.6mmx78mmx42mm  
Lock: Magnetic Lock  
Packing: 100pcs/ctn,0.072cbm(53x29.5x42cm),12kg



**S-010C(MultiFunction)Inner:165x125x55mm**

Outer Dimension:250mmx128mmx59mm  
Inner Dimension:165mmx125mmx55mm  
Lock: Magnetic Lock  
Packing:Customized



**S-011(Gum Safer)Inner:161x118x30mm**

Outer Dimension:242mmx123mmx35mm  
Inner Dimension:161mmx118mmx30mm  
Lock: Magnetic Lock  
Packing: 100pcs/ctn,0.123cbm(53.5x37x63cm),17kg



**S-012(Chocolate)Inner:182x115x40mm**

Outer Dimension:220mmx120mmx44.5mm  
Inner Dimension:182mmx115mmx40mm  
Lock: Magnetic Lock  
Packing: 100pcs/ctn,0.069cbm(53x30x43.5cm),12kg



**S-013(MultiFunction)Inner:140x72x50mm**

Outer Dimension:155mmx78mmx72mm  
Inner Dimension:140mmx72mmx50mm  
Lock: Magnetic Lock  
Packing: Customized



**S-014(MultiFunction)Inner:70x70x195mm**

Outer Dimension:208mmx88mmx77mm  
Inner Dimension:70mmx70mmx195mm  
Lock: Magnetic Lock  
Packing: 50pcs/ctn,0.0830cbm(45x41x45cm),5kg



**S-014B(Makeup II) Inner:70x70x92mm**

Outer Dimension:109mmx88mmx77mm  
 Inner Dimension:70mmx70mmx92mm  
 Lock: Magnetic Lock  
 Packing: 100pcs/ctn, 0.0830cbm(45x41x45cm), 10kg



**S-015(Multi Function) Inner:204mmx155mmx85mm**

Outer Dimension:220mmx160mmx100mm  
 Inner Dimension:204mmx155mmx85mm  
 Lock: Magnetic Lock  
 Packing: 20pcs/ctn,0.0858cbm(66x52x25cm),8.2kg



**S-015B(Multi Function) Inner:150mmx82mmx165mm**

Outer Dimension:155mmx85mmx185mm  
 Inner Dimension:150mmx82mmx165mm  
 Lock: Magnetic Lock  
 Packing: 40pcs/ctn,0.1338cbm(66x52x39cm), 14kg



**S-016(Multi Function) Inner:200x110x85mm**

Outer Dimension:213mmx117mmx112mm  
 Inner Dimension:200mmx110mmx85mm  
 Lock: Magnetic Lock  
 Packing: 15pcs/ctn,0.046cbm(48x38x25cm),5kg



**S-016B(Multi Function) Inner:110mmx85mmx155mm**

Outer Dimension:115mmx88mmx175mm  
 Inner Dimension:110mmx85mmx155mm  
 Lock: Magnetic Lock  
 Packing: 40pcs/ctn,0.0953cbm(49x54x36cm), 11kg



**S-017(Multi Function) Inner:225x115x65mm**

Outer Dimension:237mmx123mmx91mm  
 Inner Dimension:225mmx115mmx65mm  
 Lock: Magnetic Lock  
 Packing: Customized

Safer



**S-017B(MultiFunction)Inner:115mmx65mmx171mm**

Outer Dimension:118mmx68mmx190mm  
Inner Dimension:115mmx65mmx171mm  
Lock: Magnetic Lock  
Packing: 40pcs/ctn,0.088cbm(50x44x40cm), 11kg



**S-018(MultiFunction)Inner:150x120x45mm**

Outer Dimension:155mmx125mmx48mm  
Inner Dimension:150mmx120mmx45mm  
Lock: Magnetic Lock  
Packing: 50pcs/ctn,0.089cbm(46x38.5x50.5cm), 11.5kg



**S-018B(MultiFunction)Inner:170x136x60mm**

Outer Dimension:177mmx147mmx65mm  
Inner Dimension:170mmx136mmx60mm  
Lock: Magnetic Lock  
Packing: 50pcs/ctn,0.134cbm(52x45.5x56.5cm), 13.5kg



**S-019(MultiFunction)Inner:137x90x62mm**

Outer Dimension:152mmx97mmx86mm  
Inner Dimension:137mmx90mmx62mm  
Lock: Magnetic Lock  
Packing: Customized



**S-019B(MultiFunction)Inner:170x135x55mm**

Outer Dimension:182mmx142mmx82mm  
Inner Dimension:170mmx135mmx55mm  
Lock: Magnetic Lock  
Packing: Customized



**S-020(Toothpaste)Inner:247mmx60mmx51mm**

Outer Dimension:253mmx80mmx55mm  
Inner Dimension:247mmx60mmx51mm  
Lock: Magnetic Lock  
Packing: Customized



**D-100(Steel Countertop)**

Dimension: Ø95mmx30mm  
Magnetic Force: Standard  
Weight: 750g  
Packing: 50pcs/ctn, 0.025cbm(42x26x23cm), 39kg



**D-101(Aluminum Countertop)**

Dimension: Ø75mmx25mm  
Magnetic Force: Standard  
Weight: 210g  
Packing: 100pcs/ctn, 0.025cbm(42x26x23cm), 22kg



**D-102(Aluminum Countersunk)**

Dimension: Ø65mmx25mm  
Magnetic Force: Standard  
Weight: 290g  
Packing: 100pcs/ctn, 0.025cbm(42x26x23cm), 21kg



**D-103(Karaok)**

Dimension: Ø55mmx125mm  
Magnetic Force: Standard/Super  
Weight: 300g  
Packing: 60pcs/ctn, 0.057cbm(43x36x37cm), 18kg



**D-103B(Torch)**

Dimension: Ø56mmx135mm  
Magnetic Force: Standard  
Weight: 460g  
Packing: 50pcs/ctn, 0.020cbm(42x28x17cm), 23kg



**D-104(Small Countertop)**

Dimension: Ø60mmx33mm  
Magnetic Force: Standard  
Weight: 260g  
Packing: 100pcs/ctn, 0.024cbm(42x26x23cm), 26kg

Detacher





**D-105(Glasses Countertop)**

Dimension: Ø88mmx30mm  
Magnetic Force: Standard  
Weight: 290g  
Packing: 50pcs/ctn, 0.025cbm(42x26x23cm), 16kg



**D-201(Super Countertop)**

Dimension: Ø75mmx45mm  
Magnetic Force: Super  
Weight: 460g  
Packing: 50pcs/ctn, 0.020cbm(42x28x17cm), 22kg



**D-202(Super Countersunk)**

Dimension: Ø75mmx45mm  
Magnetic Force: Super  
Weight: 460g  
Packing: 50pcs/ctn, 0.020cbm(42x28x17cm), 22kg



**D-203(Cone)**

Dimension: Ø75mmx45mm  
Magnetic Force: Super  
Weight: 460g  
Packing: 50pcs/ctn, 0.020cbm(42x28x17cm), 22kg



**D-204(Cone W/Natch)**

Dimension: Ø75mmx45mm  
Magnetic Force: Super  
Weight: 460g  
Packing: 50pcs/ctn, 0.020cbm(42x28x17cm), 22kg



**D-301(Magnetic)**

Dimension: Ø75mmx35mm  
Magnetic Force: Super  
Weight: 460g  
Packing: 50pcs/ctn, 0.020cbm(42x28x17cm), 20kg



**D-302(Flat Golf Detacher)**

Dimension: Ø75mmx35mm  
Magnetic Force: Super  
Weight: 460g  
Packing: 50pcs/ctn, 0.020cbm(42x28x17cm), 20kg



**D-302B(Flat Golf Detacher)**

Dimension: Ø68mmx28mm  
Magnetic Force: Super  
Weight: 300g  
Packing: 50pcs/ctn, 0.020cbm(42x28x17cm), 20kg



**D-303(Golf/Dome Detacher)**

Dimension: Ø75mmx35mm  
Magnetic Force: Super  
Weight: 460g  
Packing: 50pcs/ctn, 0.020cbm(42x28x17cm), 20kg



**D-303B(Golf W/Natch)**

Dimension: Ø72mmx35mm  
Magnetic Force: Super  
Weight: 400g  
Packing: 50pcs/ctn, 0.020cbm(42x28x17cm), 20kg



**D-303C(Plastic Golf)**

Dimension: Ø75mmx35mm  
Magnetic Force: Super  
Weight: 300g  
Packing: 50pcs/ctn, 0.020cbm(42x28x17cm), 18kg



**D-304(Magnetic)**

Dimension: Ø75mmx35mm  
Magnetic Force: Super  
Weight: 460g  
Packing: 50pcs/ctn, 0.020cbm(42x28x17cm), 22kg



**D-305(Magnetic)**

Dimension: Ø75mmx35mm  
Magnetic Force: Super  
Weight: 460g  
Packing: 50pcs/ctn, 0.020cbm(42x28x17cm), 22kg



**D-305B(Magnetic W/Natch)**

Dimension: Ø72mmx39mm  
Magnetic Force: Super  
Weight: 389g  
Packing: 50pcs/ctn, 0.020cbm(42x28x17cm), 20kg



**D-306(Magnetic)**

Dimension: Ø74mmx35mm  
Magnetic Force: Super  
Weight: 420g  
Packing: 50pcs/ctn, 0.027cbm(42x27x24cm), 37kg



**D-307(Plastic Coated)**

Dimension: Ø82mmx75mm  
Magnetic Force: Super  
Weight: 360g  
Packing: 50pcs/ctn, 0.033cbm(42x29x27cm), 18kg



**D-307B(Magnetic)**

Dimension: Ø74mmx35mm  
Magnetic Force: Super  
Weight: 420g  
Packing: 50pcs/ctn, 0.020cbm(42x28x17cm), 24kg



**D-308(Key Unlock)**

Dimension: Ø74mmx37mm  
Magnetic Force: Super  
Weight: 520g  
Packing: 50pcs/ctn, 0.020cbm(42x28x17cm), 22kg



**D-309(Key Unlock)**

Dimension: Ø88mmx40mm  
Magnetic Force: Super  
Weight:430g  
Packing: 50pcs/ctn, 0.020cbm(42x28x17cm), 22kg



**D-310(Plastic Dome)**

Dimension: Ø72mmx39mm  
Magnetic Force: Super  
Weight:320g  
Packing: 50pcs/ctn, 0.020cbm(42x28x17cm), 18kg



**D-311(Dome W/Natch)**

Dimension:Ø73mmx34mm  
Magnetic Force: Super  
Weight:400g  
Packing: 50pcs/ctn, 0.020cbm(42x28x17cm), 20kg



**D-312(Hyper Detacher)**

Dimension: Ø90mmx52mm  
Magnetic Force: Hyper  
Weight: 1200g  
Packing: 25pcs/ctn, 0.020cbm(42x28x17cm), 26kg



**D-312B(Hyper Detacher)**

Dimension:Ø82mmx55mm  
Magnetic Force: Hyper  
Weight:1033g  
Packing: 10pcs/ctn, 0.012cbm(34x25x14cm), 11kg



**D-401(Flexible Detacher)**

Dimension: Ø40mmx45mm  
Magnetic Force: Standard  
Weight:400g  
Packing: 50pcs/ctn, 0.021cbm(41.5x28x18cm), 22kg

Detacher





**D-402(Magnetic Lid)**

Dimension:  $\varnothing 45\text{mm} \times 38\text{mm}$   
Weight: 48g  
Packing: 250pcs/ctn, 0.011cbm(34x24x14cm), 12kg



**D-403B(Stoplock Releaser)**

Dimension:  $\varnothing 20\text{mm} \times 58\text{mm}$   
Magnetic Force: Standard  
Weight: 60g  
Packing: 400pcs/ctn, 0.014cbm(34x24x17cm), 24kg



**D-403C(Stoplock Releaser)**

Dimension:  $\varnothing 30\text{mm} \times 46\text{mm}$   
Magnetic Force: Standard  
Weight: 150g  
Packing: Customized



**D-404(Cylindrical)**

Dimension:  $\varnothing 40\text{mm} \times 45\text{mm}$   
Magnetic Force: Standard/Super  
Weight: 211g  
Packing: 50pcs/ctn, 0.021cbm(41.5x28x18cm), 22kg



**D-405(Sliding Detacher)**

Dimension:  $118.42\text{mm} \times 23.66\text{mm} \times 12.5\text{mm}$   
Magnetic Force: Standard  
Weight: 87g  
Packing: Customized



**D-406(Portable Detacher)**

Dimension:  $102.2\text{mm} \times \varnothing 47.85\text{mm} \times \varnothing 30.1\text{mm}$   
Magnetic Force: Standard  
Weight: 100g  
Packing: Customized



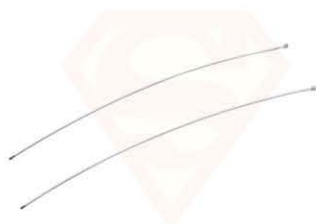
**L-001(Two Loops)**

Length: 200mm or Customized  
Color: Black/White  
Packing: 5,000pcs/ctn, 0.028cbm(52x36x15cm), 13kg



**L-002(Loop-to-Pin)**

Length: 170mm or Customized  
Color: Black/White  
Packing: 10,000pcs/ctn, 0.028cbm(52x36x15cm), 23kg



**L-003(Point Welding)**

Length: 178mm or Customized  
Packing: 10,000pcs/ctn, 0.011cbm(30x20x18cm), 14kg



**L-004(Loop-to-Point)**

Length: 178mm or Customized  
Packing: 5,000pcs/ctn, 0.011cbm(30x20x18cm), 8kg



**L-005(Clear Loop-to-Pin)**

Length: 110mm or Customized  
Color: Transparent  
Packing: 10,000pcs/ctn, 0.028cbm(52x36x15cm), 23kg



**L-006(Eye-to-Loop)**

Length: 230mm or Customized  
Color: Black/White  
Packing: 5,000pcs/ctn, 0.028cbm(52x36x15cm), 25kg



**L-007(Multi Coated)**

Length: 650mm or Customized  
Color: Black/White  
Packing: 500pcs/ctn, 0.032cbm(38x30x28cm), 29kg



**L-008(Heavy Loop)**

Length: 180mm or Customized  
Color: Transparent  
Packing: 2,500pcs/ctn, 0.028cbm(52x36x15cm), 16kg



**L-009(Jewelry Lanyard)**

Length: 150mm or Customized  
Color: Black  
Packing: 10,000pcs/ctn, 0.03cbm(38x29x28cm), 29kg



**L-010(Lanyard with Cap)**

Length: 250mm or Customized  
Color: Transparent  
Packing: 2,500pcs/ctn, 0.028cbm(52x36x15cm), 16kg



**P-01(Flat Pin)**

Length: 16mm or 19mm or Customized  
 Head Diameter: 12mm  
 Spec: Smooth or Grooved  
 Packing: 10,000pcs/ctn, 0.011cbm(34x24x14cm), 14kg



**P-02(Swivel Pin)**

Length: 16mm or 19mm or Customized  
 Head Diameter: 12mm  
 Spec: Smooth or Grooved  
 Packing: 10,000pcs/ctn, 0.011cbm(34x24x14cm), 21kg



**P-05(Dome Pin)**

Length: 16mm or 19mm or Customized  
 Head Diameter: Ø15mm or 18mm  
 Spec: Smooth or Grooved  
 Packing: 10,000pcs/ctn, 0.024cbm(41x31x19cm), 20kg



**P-06(Cone Pin)**

Length: 16mm or 19mm or Customized  
 Head Diameter: 14mm  
 Spec: Smooth or Grooved  
 Packing: 10,000pcs/ctn, 0.024cbm(41x31x19cm), 20kg



**P-07(Cone Plastic)**

Length: 16mm or 19mm or Customized  
 Head Diameter: 16mm  
 Spec: Smooth or Grooved  
 Packing: 10,000pcs/ctn, 0.024cbm(41x31x19cm), 9kg



**P-08(Dome Plastic)**

Length: 16mm or 19mm or Customized  
 Head Diameter: 20mm  
 Spec: Smooth or Grooved  
 Packing: 10,000pcs/ctn, 0.035cbm(56x35x18cm), 11kg





**P-08B(Light Dome Plastic)**

Length: 16mm or 19mm or Customized  
Head Diameter: 20mm  
Spec: Smooth or Grooved  
Packing: 10,000pcs/ctn, 0.035cbm(56x35x18cm), 8kg



**P-09(Umbrella)**

Length: 16mm or 19mm or Customized  
Head Diameter: 20mm  
Spec: Smooth or Grooved  
Packing: 10,000pcs/ctn, 0.035cbm(56x35x18cm), 11kg



**P-010(Hook Pin)**

Length: 16mm or 19mm or Customized  
Head Diameter: 30mmx20mm or Customized  
Spec: Smooth or Grooved  
Packing: 5,000pcs/ctn, 0.041cbm(56x35x21cm), 24kg



**P-011(Color Pin)**

Length: 16mm or 19mm or Customized  
Head Diameter: 12mm  
Spec: Smooth or Grooved  
Packing: 10,000pcs/ctn, 0.014cbm(34x24x17cm), 18kg



**P-012(Mini Dome Plastic)**

Length: 16mm or 19mm or Customized  
Head Diameter: 13mm  
Spec: Smooth or Grooved  
Packing: 10,000pcs/ctn, 0.013cbm(34x24x16cm), 6kg



**P-020(Mushroom)**

Length: 16mm or 19mm or Customized  
Head Diameter: 18mm  
Spec: Smooth or Grooved  
Packing: 10,000pcs/ctn, 0.041cbm(56x35x21cm), 11kg



**C-001(Ferrite Coil)**

Frequency: 58KHz /8.2MHz  
 Spec: 25mm/30mm/33mm or Customized  
 Packing: Customized



**C-002(Core Coil)**

Frequency: 8.2/3.25/1.95/4.8MHz or Customized  
 Spec: Various shape such as round, square, cone etc  
 Packing: Customized



**C-101(Nipple Clutch)**

Color: Gray/White or Customized  
 Dimension: Ø19mm  
 Lock: Magnetic Lock  
 Packing: 4,000pcs/ctn, 0.020cbm(40x30x17cm), 14kg



**C-102(Cone Clutch)**

Color: Gray/White or Customized  
 Dimension: Ø25mm  
 Lock: Magnetic Lock  
 Packing: 2,000pcs/ctn, 0.028cbm(38x29x25cm), 11kg



**C-104(Stoplock)**

Color: Red/Black or Customized  
 Dimension: 39mmx19mm  
 Lock: Magnetic Lock  
 Packing: 1,000pcs/ctn, 0.020cbm(40x30x17cm), 7kg



**C-104B(Stoplock)**

Color: Red/Black or Customized  
 Dimension: 39mmx19mm  
 Lock: Magnetic Lock  
 Packing: 1,000pcs/ctn, 0.029cbm(40x30x24cm), 10kg



**C-104C(Double Stoplock)**

Color: Red/Black or Customized  
Dimension: 70mmx19mm  
Lock: Magnetic Lock  
Packing: 1,000pcs/ctn, 0.031cbm(59x40x13cm), 12kg



**C-104D(Double Stoplock)**

Color: Black or Customized  
Dimension: 45mmx35mm  
Lock: Magnetic Lock  
Packing: Customized



**C-104E(Double Stoplock)**

Color: Black or Customized  
Dimension: 45mmx45mm  
Lock: Magnetic Lock  
Packing: Customized



**C-107(Steel Hook)**

Color: Gray/White or Customized  
Lock: Steel Plate Lock  
Packing: 1,500pcs/ctn, 0.013cbm(34x24x16cm), 7kg



**C-108(Back Clutch)**

Color: Grey/White or Customized  
Dimension: 51mmx28mm  
Lock: Steel Plate Lock  
Packing: 1,000pcs/ctn, 0.02cbm(39x29x18cm), 7kg



**C-112(Security Display Hook)**

Color: White/Beige/Gray or Customized  
Dimension: 220mm/170mm/140mm  
Effective Length: 195mm/145mm/120mm  
Lock: Mechanic Lock(Sliding Pad)  
Packing: Customized

## One Stop Shop for All Your Security Needs

A decorative graphic consisting of two overlapping wavy bands. The upper band is a vibrant blue, and the lower band is a light grey. Both bands curve downwards from left to right, creating a sense of motion and depth.

Shanghai Sinotag Electronic Technology Co., Ltd

Tel: +86-21-66051278, 66051258, 56317702, 56317705, 56313521

Fax: +86-21-66051220

Email: [info@sinotag.net](mailto:info@sinotag.net), [sales@sinotag.net](mailto:sales@sinotag.net)

Website: [www.sinotag.net](http://www.sinotag.net)